

Datasheet for ABIN1538324
anti-AMPD3 antibody (AA 325-356)[Go to Product page](#)

3 Images

Overview

Quantity:	400 µL
Target:	AMPD3
Binding Specificity:	AA 325-356
Reactivity:	Human, Mouse
Host:	Rabbit
Clonality:	Polyclonal
Conjugate:	This AMPD3 antibody is un-conjugated
Application:	Western Blotting (WB)

Product Details

Immunogen:	This AMPD3 antibody is generated from rabbits immunized with a KLH conjugated synthetic peptide between 325-356 amino acids from the Central region of human AMPD3.
Clone:	RB17671
Isotype:	Ig Fraction
Purification:	This antibody is purified through a protein A column, followed by peptide affinity purification.

Target Details

Target:	AMPD3
Alternative Name:	AMPD3 (AMPD3 Products)
Background:	AMPD3 is a member of the AMP deaminase gene family. This protein is a highly regulated

Target Details

enzyme that catalyzes the hydrolytic deamination of adenosine monophosphate to inosine monophosphate, a branch point in the adenylate catabolic pathway. The protein is the erythrocyte (E) isoforms, whereas other family members isoforms predominate in muscle (M) and liver (L) cells. Mutations in this gene lead to the clinically asymptomatic, autosomal recessive condition erythrocyte AMP deaminase deficiency.

Molecular Weight: 88812

Gene ID: 272

NCBI Accession: [NP_000471](#), [NP_001020560](#), [NP_001020561](#), [NP_001165901](#), [NP_001165902](#)

UniProt: [Q01432](#)

Application Details

Application Notes: WB: 1:1000. WB: 1:1000. WB: 1:1000

Restrictions: For Research Use only

Handling

Format: Liquid

Buffer: Purified polyclonal antibody supplied in PBS with 0.09 % (W/V) sodium azide.

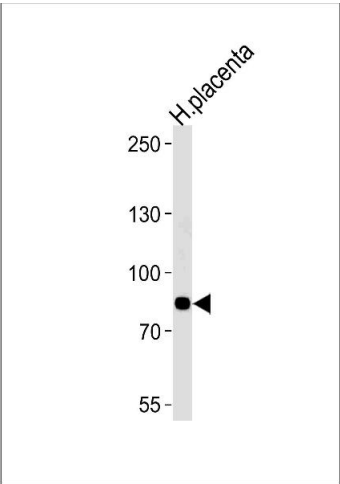
Preservative: Sodium azide

Precaution of Use: This product contains Sodium azide: a POISONOUS AND HAZARDOUS SUBSTANCE which should be handled by trained staff only.

Storage: 4 °C,-20 °C

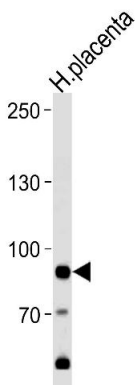
Storage Comment: Maintain refrigerated at 2-8 deg C for up to 6 months. For long term storage store at -20 deg C in small aliquots to prevent freeze-thaw cycles.

Expiry Date: 6 months



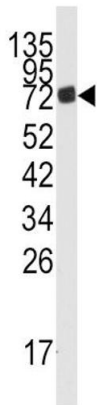
Western Blotting

Image 1. PD3 Antibody (Center) (ABIN1538324 and ABIN2841988) western blot analysis in human placenta tissue lysate (35 µg/lane). This demonstrates that the PD3 antibody detected PD3 protein (arrow).



Western Blotting

Image 2. PD3 Antibody (Center) (ABIN1538324 and ABIN2841988) western blot analysis in human placenta tissue lysates (35 µg/lane). This demonstrates the PD3 antibody detected the PD3 protein (arrow).



Western Blotting

Image 3. Western blot analysis of anti-PD3 Antibody (Center) (ABIN1538324 and ABIN2841988) in mouse lung tissue lysates (35 µg/lane). PD3 (arrow) was detected using the purified Pab.