



[Go to Product page](#)

Datasheet for ABIN1538326

## anti-Otopetrin 2 antibody (AA 336-363)

### 1 Image

#### Overview

Quantity:	400 µL
Target:	Otopetrin 2 (OTOP2)
Binding Specificity:	AA 336-363
Reactivity:	Human
Host:	Rabbit
Clonality:	Polyclonal
Conjugate:	This Otopetrin 2 antibody is un-conjugated
Application:	Western Blotting (WB)

#### Product Details

Immunogen:	This OTOP2 antibody is generated from rabbits immunized with a KLH conjugated synthetic peptide between 336-363 amino acids from the Central region of human OTOP2.
Clone:	RB37737
Isotype:	Ig Fraction
Predicted Reactivity:	M
Purification:	This antibody is purified through a protein A column, followed by peptide affinity purification.

#### Target Details

Target:	Otopetrin 2 (OTOP2)
Alternative Name:	OTOP2 ( <a href="#">OTOP2 Products</a> )

## Target Details

---

**Background:** Otopetrins are multi-transmembrane domain proteins that share conserved gene and protein structure and are possibly involved in the formation of otoconia and otoliths. Located in the utricle and saccule of the inner ear, otoconia are complex calcium carbonate biominerals that are required for the normal sensation of gravity and linear acceleration. Vertigo and loss of balance may be attributed to degeneration or displacement of otoconia. The otopetrin family consists of three proteins, OTOP1, OTOP2 and OTOP3. These proteins have 12 putative transmembrane domains that are clustered into three otopetrin domains (OD-I, II and III). OTOP1 was the first described member of the Otopetrin family. Mutations of OTOP1 leads to absence of otoconia or otoliths, though inner ear development is normal. OTOP2 and OTOP3 share significant structural similarity with OTOP1 and may also play a role in the formation of mineralized structures.

---

**Molecular Weight:** 62236

---

**Gene ID:** 92736

---

**NCBI Accession:** [NP\\_835454](#)

---

**UniProt:** [Q7RTS6](#)

## Application Details

---

**Application Notes:** WB: 1:1000

---

**Restrictions:** For Research Use only

## Handling

---

**Format:** Liquid

---

**Buffer:** Purified polyclonal antibody supplied in PBS with 0.09 % (W/V) sodium azide.

---

**Preservative:** Sodium azide

---

**Precaution of Use:** This product contains Sodium azide: a POISONOUS AND HAZARDOUS SUBSTANCE which should be handled by trained staff only.

---

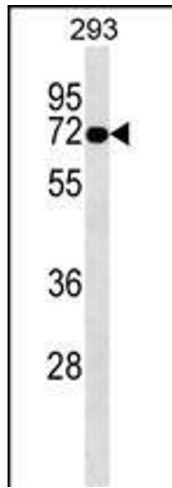
**Storage:** 4 °C,-20 °C

---

**Storage Comment:** OTOP2 Antibody (Center) can be refrigerated at 2-8 °C for up to 6 months. For long term storage, keep at -20 °C.

---

**Expiry Date:** 6 months



### Western Blotting

**Image 1.** OTOP2 Antibody (Center) (ABIN1538326 and ABIN2849278) western blot analysis in 293 cell line lysates (35 µg/lane). This demonstrates the OTOP2 antibody detected the OTOP2 protein (arrow).