



[Go to Product page](#)

Datasheet for ABIN1538330
anti-EXD3 antibody (AA 340-367)

1 Image

Overview

Quantity:	400 µL
Target:	EXD3
Binding Specificity:	AA 340-367
Reactivity:	Human
Host:	Rabbit
Clonality:	Polyclonal
Conjugate:	This EXD3 antibody is un-conjugated
Application:	Western Blotting (WB)

Product Details

Immunogen:	This EXD3 antibody is generated from rabbits immunized with a KLH conjugated synthetic peptide between 340-367 amino acids from the Central region of human EXD3.
Clone:	RB38763
Isotype:	Ig Fraction
Purification:	This antibody is purified through a protein A column, followed by peptide affinity purification.

Target Details

Target:	EXD3
Alternative Name:	EXD3 (EXD3 Products)
Background:	The function of this protein remains unknown.

Target Details

Molecular Weight:	96598
Gene ID:	54932
NCBI Accession:	NP_060290
UniProt:	Q8N9H8

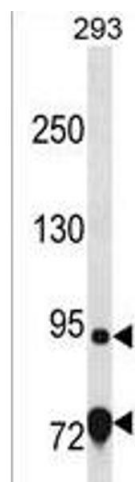
Application Details

Application Notes:	WB: 1:1000
Restrictions:	For Research Use only

Handling

Format:	Liquid
Buffer:	Purified polyclonal antibody supplied in PBS with 0.09 % (W/V) sodium azide.
Preservative:	Sodium azide
Precaution of Use:	This product contains Sodium azide: a POISONOUS AND HAZARDOUS SUBSTANCE which should be handled by trained staff only.
Storage:	4 °C, -20 °C
Storage Comment:	EXD3 Antibody (Center) can be refrigerated at 2-8 °C for up to 6 months. For long term storage, keep at -20 °C.
Expiry Date:	6 months

Images



Western Blotting

Image 1. EXD3 Antibody (Center) (ABIN1538330 and ABIN2849926) western blot analysis in 293 cell line lysates (35 µg/lane). This demonstrates the EXD3 Antibody detected the EXD3 protein (arrow).