

Datasheet for ABIN1538332

anti-Tyrosinase-Related Protein 1 antibody (AA 341-371)[Go to Product page](#)**1** Image

Overview

Quantity:	400 µL
Target:	Tyrosinase-Related Protein 1 (TYRP1)
Binding Specificity:	AA 341-371
Reactivity:	Human
Host:	Rabbit
Clonality:	Polyclonal
Conjugate:	This Tyrosinase-Related Protein 1 antibody is un-conjugated
Application:	Western Blotting (WB)

Product Details

Immunogen:	This TYRP1 antibody is generated from rabbits immunized with a KLH conjugated synthetic peptide between 341-371 amino acids from the Central region of human TYRP1.
Clone:	RB19157
Isotype:	Ig Fraction
Purification:	This antibody is purified through a protein A column, followed by peptide affinity purification.

Target Details

Target:	Tyrosinase-Related Protein 1 (TYRP1)
Alternative Name:	TYRP1 (TYRP1 Products)
Background:	This gene encodes a melanosomal enzyme that belongs to the tyrosinase family and plays an

Target Details

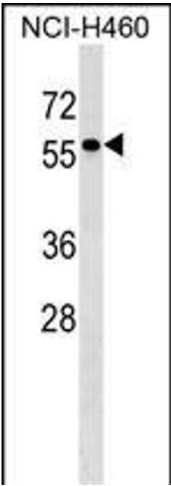
	important role in the melanin biosynthetic pathway. Defects in this gene are the cause of rufous oculocutaneous albinism and oculocutaneous albinism type III.
Molecular Weight:	60724
Gene ID:	7306
NCBI Accession:	NP_000541
UniProt:	P17643

Application Details

Application Notes:	WB: 1:1000
Restrictions:	For Research Use only

Handling

Format:	Liquid
Buffer:	Purified polyclonal antibody supplied in PBS with 0.09 % (W/V) sodium azide.
Preservative:	Sodium azide
Precaution of Use:	This product contains Sodium azide: a POISONOUS AND HAZARDOUS SUBSTANCE which should be handled by trained staff only.
Storage:	4 °C,-20 °C
Storage Comment:	TYRP1 Antibody (Center) can be refrigerated at 2-8 °C for up to 6 months. For long term storage, keep at -20 °C.
Expiry Date:	6 months



Western Blotting

Image 1. TYRP1 Antibody (Center) (ABIN1538332 and ABIN2849139) western blot analysis in NCI- cell line lysates (35 µg/lane).This demonstrates the TYRP1 antibody detected the TYRP1 protein (arrow).