

Datasheet for ABIN1538335
anti-LILRB1 antibody (AA 345-374)[Go to Product page](#)

1 Image

Overview

Quantity:	400 µL
Target:	LILRB1
Binding Specificity:	AA 345-374
Reactivity:	Human
Host:	Rabbit
Clonality:	Polyclonal
Conjugate:	This LILRB1 antibody is un-conjugated
Application:	Western Blotting (WB)

Product Details

Immunogen:	This LILRB1 antibody is generated from rabbits immunized with a KLH conjugated synthetic peptide between 345-374 amino acids from the Central region of human LILRB1.
Clone:	RB36844
Isotype:	Ig Fraction
Purification:	This antibody is purified through a protein A column, followed by peptide affinity purification.

Target Details

Target:	LILRB1
Alternative Name:	LILRB1 (LILRB1 Products)
Background:	This gene is a member of the leukocyte immunoglobulin-like receptor (LIR) family, which is

Target Details

found in a gene cluster at chromosomal region 19q13.4. The encoded protein belongs to the subfamily B class of LIR receptors which contain two or four extracellular immunoglobulin domains, a transmembrane domain, and two to four cytoplasmic immunoreceptor tyrosine-based inhibitory motifs (ITIMs). The receptor is expressed on immune cells where it binds to MHC class I molecules on antigen-presenting cells and transduces a negative signal that inhibits stimulation of an immune response. It is thought to control inflammatory responses and cytotoxicity to help focus the immune response and limit autoreactivity. Multiple transcript variants encoding different isoforms have been found for this gene.

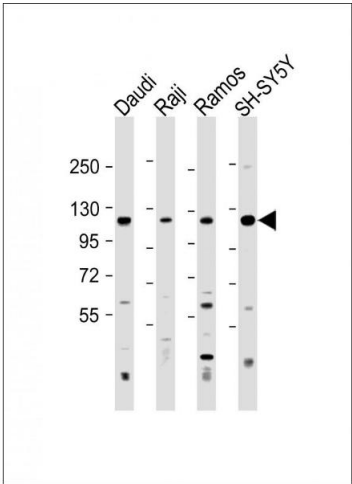
Molecular Weight:	70819
Gene ID:	10859
NCBI Accession:	NP_001075106 , NP_001075107 , NP_001075108 , NP_001265327 , NP_001265328 , NP_006660
UniProt:	Q8NHL6
Pathways:	Cellular Response to Molecule of Bacterial Origin , Regulation of Leukocyte Mediated Immunity , Positive Regulation of Immune Effector Process , Production of Molecular Mediator of Immune Response

Application Details

Application Notes:	WB: 1:500-1:2000
Restrictions:	For Research Use only

Handling

Format:	Liquid
Buffer:	Purified polyclonal antibody supplied in PBS with 0.09 % (W/V) sodium azide.
Preservative:	Sodium azide
Precaution of Use:	This product contains Sodium azide: a POISONOUS AND HAZARDOUS SUBSTANCE which should be handled by trained staff only.
Storage:	4 °C,-20 °C
Storage Comment:	LILRB1 Antibody (Center) can be refrigerated at 2-8 °C for up to 6 months. For long term storage, keep at -20 °C.
Expiry Date:	6 months



Western Blotting

Image 1. All lanes : Anti-LILRB1 Antibody (Center) at 1:500-1:2000 dilution Lane 1: Daudi whole cell lysate Lane 2: Raji whole cell lysate Lane 3: Ramos whole cell lysate Lane 4: SH-SY5Y whole cell lysate Lysates/proteins at 20 µg per lane. Secondary Goat Anti-Rabbit IgG, (H+L), Peroxidase conjugated at 1/10000 dilution. Predicted band size : 71 kDa Blocking/Dilution buffer: 5 % NFDM/TBST.