



Datasheet for ABIN1538338
anti-SCML2 antibody (AA 348-375)



[Go to Product page](#)

1 Image

Overview

Quantity:	400 µL
Target:	SCML2
Binding Specificity:	AA 348-375
Reactivity:	Human
Host:	Rabbit
Clonality:	Polyclonal
Conjugate:	This SCML2 antibody is un-conjugated
Application:	Western Blotting (WB)

Product Details

Immunogen:	This SCML2 antibody is generated from rabbits immunized with a KLH conjugated synthetic peptide between 348-375 amino acids from the Central region of human SCML2.
Clone:	RB37628
Isotype:	Ig Fraction
Purification:	This antibody is purified through a protein A column, followed by peptide affinity purification.

Target Details

Target:	SCML2
Alternative Name:	SCML2 (SCML2 Products)
Background:	This gene encodes a member of the Polycomb group proteins. These proteins form the

Target Details

Polycomb repressive complexes which are involved in transcriptional repression. The encoded protein binds histone peptides that are monomethylated at lysine residues and may be involved in regulating homeotic gene expression during development.

Molecular Weight: 77257

Gene ID: 10389

NCBI Accession: [NP_006080](#)

UniProt: [Q9UQR0](#)

Application Details

Application Notes: WB: 1:1000

Restrictions: For Research Use only

Handling

Format: Liquid

Buffer: Purified polyclonal antibody supplied in PBS with 0.09 % (W/V) sodium azide.

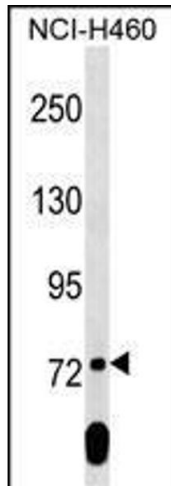
Preservative: Sodium azide

Precaution of Use: This product contains Sodium azide: a POISONOUS AND HAZARDOUS SUBSTANCE which should be handled by trained staff only.

Storage: 4 °C, -20 °C

Storage Comment: SCML2 Antibody (Center) can be refrigerated at 2-8 °C for up to 6 months. For long term storage, keep at -20 °C.

Expiry Date: 6 months



Western Blotting

Image 1. SCML2 Antibody (Center) (ABIN1538338 and ABIN2849362) western blot analysis in NCI- cell line lysates (35 µg/lane). This demonstrates the SCML2 antibody detected the SCML2 protein (arrow).