



[Go to Product page](#)

Datasheet for ABIN1538341  
**anti-ALS2CL antibody (AA 349-377)**

1 Image

### Overview

Quantity:	400 µL
Target:	ALS2CL
Binding Specificity:	AA 349-377
Reactivity:	Human
Host:	Rabbit
Clonality:	Polyclonal
Conjugate:	This ALS2CL antibody is un-conjugated
Application:	Western Blotting (WB)

### Product Details

Immunogen:	This ALS2CL antibody is generated from rabbits immunized with a KLH conjugated synthetic peptide between 349-377 amino acids from the Central region of human ALS2CL.
Clone:	RB37229
Isotype:	Ig Fraction
Purification:	This antibody is purified through a protein A column, followed by peptide affinity purification.

### Target Details

Target:	ALS2CL
Alternative Name:	ALS2CL ( <a href="#">ALS2CL Products</a> )
Background:	ALS2CL acts as a guanine nucleotide exchange factor (GEF) for Rab5 GTPase. Regulates the

## Target Details

---

ALS2-mediated endosome dynamics.

Molecular Weight: 107748

Gene ID: 259173

NCBI Accession: [NP\\_001177636](#), [NP\\_667340](#), [NP\\_877576](#)

UniProt: [Q60I27](#)

## Application Details

---

Application Notes: WB: 1:1000

Restrictions: For Research Use only

## Handling

---

Format: Liquid

Buffer: Purified polyclonal antibody supplied in PBS with 0.09 % (W/V) sodium azide.

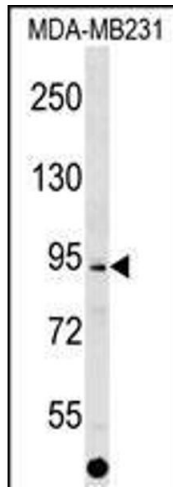
Preservative: Sodium azide

Precaution of Use: This product contains Sodium azide: a POISONOUS AND HAZARDOUS SUBSTANCE which should be handled by trained staff only.

Storage: 4 °C, -20 °C

Storage Comment: ALS2CL Antibody (Center) can be refrigerated at 2-8 °C for up to 6 months. For long term storage, keep at -20 °C.

Expiry Date: 6 months



### Western Blotting

**Image 1.** ALS2CL Antibody (Center) (ABIN1538341 and ABIN2849165) western blot analysis in MDA-M cell line lysates (35 µg/lane). This demonstrates the ALS2CL antibody detected the ALS2CL protein (arrow).