

Datasheet for ABIN1538342  
**anti-RCBTB1 antibody (AA 350-377)**[Go to Product page](#)

## 1 Image

## Overview

Quantity:	400 µL
Target:	RCBTB1
Binding Specificity:	AA 350-377
Reactivity:	Human
Host:	Rabbit
Clonality:	Polyclonal
Application:	Western Blotting (WB)

## Product Details

Immunogen:	This RCBTB1 antibody is generated from rabbits immunized with a KLH conjugated synthetic peptide between 350-377 amino acids from the Central region of human RCBTB1.
Clone:	RB36517
Isotype:	Ig Fraction
Purification:	This antibody is purified through a protein A column, followed by peptide affinity purification.

## Target Details

Target:	RCBTB1
Alternative Name:	RCBTB1 ( <a href="#">RCBTB1 Products</a> )
Background:	This gene encodes a protein with an N-terminal RCC1 domain and a C-terminal BTB (broad complex, tramtrack and bric-a-brac) domain. In rat, over-expression of this gene in vascular smooth muscle cells induced cellular hypertrophy. In rat, the C-terminus of RCBTB1 interacts

## Target Details

with the angiotensin II receptor-1A. In humans, this gene maps to a region of chromosome 13q that is frequently deleted in B-cell chronic lymphocytic leukemia and other lymphoid malignancies.

Molecular Weight: 58252

Gene ID: 55213

NCBI Accession: [NP\\_060661](#)

UniProt: [Q8NDN9](#)

## Application Details

Application Notes: WB: 1:1000

Restrictions: For Research Use only

## Handling

Format: Liquid

Buffer: Purified polyclonal antibody supplied in PBS with 0.09 % (W/V) sodium azide.

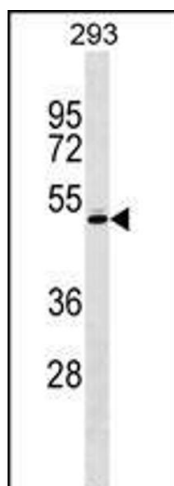
Preservative: Sodium azide

Precaution of Use: This product contains Sodium azide: a POISONOUS AND HAZARDOUS SUBSTANCE which should be handled by trained staff only.

Storage: 4 °C, -20 °C

Storage Comment: RCBTB1 Antibody (Center) can be refrigerated at 2-8 °C for up to 6 months. For long term storage, keep at -20 °C.

Expiry Date: 6 months



#### Western Blotting

**Image 1.** RCBTB1 Antibody (Center) (ABIN1538342 and ABIN2848507) western blot analysis in 293 cell line lysates (35 µg/lane). This demonstrates the RCBTB1 antibody detected the RCBTB1 protein (arrow).