

Datasheet for ABIN1538359
anti-Lysozyme-Like 4 antibody (AA 37-63)[Go to Product page](#)

1 Image

Overview

Quantity:	400 µL
Target:	Lysozyme-Like 4 (LYZL4)
Binding Specificity:	AA 37-63
Reactivity:	Human
Host:	Rabbit
Clonality:	Polyclonal
Conjugate:	This Lysozyme-Like 4 antibody is un-conjugated
Application:	Western Blotting (WB)

Product Details

Immunogen:	This LYZL4 antibody is generated from rabbits immunized with a KLH conjugated synthetic peptide between 37-63 amino acids from the Central region of human LYZL4.
Clone:	RB38293
Isotype:	Ig Fraction
Purification:	This antibody is purified through a protein A column, followed by peptide affinity purification.

Target Details

Target:	Lysozyme-Like 4 (LYZL4)
Alternative Name:	LYZL4 (LYZL4 Products)
Background:	Lysozymes (see LYZ, MIM 153450), especially C-type lysozymes, are well-recognized

Target Details

bacteriolytic factors widely distributed in the animal kingdom and play a mainly protective role in host defense. LYZL4 is a member of a family of lysozyme-like genes (Zhang et al., 2005 [PubMed 16014814]).

Molecular Weight: 16433

Gene ID: 131375

NCBI Accession: [NP_653235](#)

UniProt: [Q96KX0](#)

Application Details

Application Notes: WB: 1:1000

Restrictions: For Research Use only

Handling

Format: Liquid

Buffer: Purified polyclonal antibody supplied in PBS with 0.09 % (W/V) sodium azide.

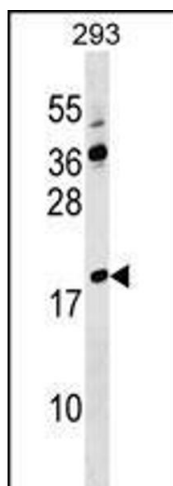
Preservative: Sodium azide

Precaution of Use: This product contains Sodium azide: a POISONOUS AND HAZARDOUS SUBSTANCE which should be handled by trained staff only.

Storage: 4 °C, -20 °C

Storage Comment: LYZL4 Antibody (Center) can be refrigerated at 2-8 °C for up to 6 months. For long term storage, keep at -20 °C.

Expiry Date: 6 months



Western Blotting

Image 1. LYZL4 Antibody (Center) (ABIN1538359 and ABIN2849592) western blot analysis in 293 cell line lysates (35 µg/lane). This demonstrates the LYZL4 antibody detected the LYZL4 protein (arrow).