

Datasheet for ABIN1538365
anti-NHLH1 antibody (AA 38-67)[Go to Product page](#)

1 Image

Overview

Quantity:	400 µL
Target:	NHLH1
Binding Specificity:	AA 38-67
Reactivity:	Human
Host:	Rabbit
Clonality:	Polyclonal
Conjugate:	This NHLH1 antibody is un-conjugated
Application:	Western Blotting (WB)

Product Details

Immunogen:	This NHLH1 antibody is generated from rabbits immunized with a KLH conjugated synthetic peptide between 38-67 amino acids from the Central region of human NHLH1.
Clone:	RB32879
Isotype:	Ig Fraction
Purification:	This antibody is purified through a protein A column, followed by peptide affinity purification.

Target Details

Target:	NHLH1
Alternative Name:	NHLH1 (NHLH1 Products)
Background:	The helix-loop-helix (HLH) proteins are a family of putative transcription factors, some of which

Target Details

have been shown to play an important role in growth and development of a wide variety of tissues and species. Four members of this family have been clearly implicated in tumorigenesis via their involvement in chromosomal translocations in lymphoid tumors: MYC (MIM 190080), LYL1 (MIM 151440), E2A (MIM 147141), and SCL (MIM 187040).[supplied by OMIM].

Gene ID: 4807

NCBI Accession: [NP_005589](#)

UniProt: [Q02575](#)

Application Details

Application Notes: WB: 1:1000

Restrictions: For Research Use only

Handling

Format: Liquid

Buffer: Purified polyclonal antibody supplied in PBS with 0.09 % (W/V) sodium azide.

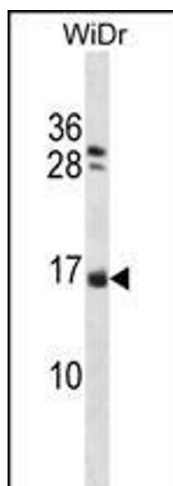
Preservative: Sodium azide

Precaution of Use: This product contains Sodium azide: a POISONOUS AND HAZARDOUS SUBSTANCE which should be handled by trained staff only.

Storage: 4 °C, -20 °C

Storage Comment: NHLH1 Antibody (Center) can be refrigerated at 2-8 °C for up to 6 months. For long term storage, keep at -20 °C.

Expiry Date: 6 months



Western Blotting

Image 1. NHLH1 Antibody (Center) (ABIN1538365 and ABIN2848569) western blot analysis in WiDr cell line lysates (35 µg/lane). This demonstrates the NHLH1 antibody detected the NHLH1 protein (arrow).