



[Go to Product page](#)

Datasheet for ABIN1538370  
**anti-ATP2A2 antibody (AA 374-403)**

1 Image

### Overview

Quantity:	400 µL
Target:	ATP2A2
Binding Specificity:	AA 374-403
Reactivity:	Human
Host:	Rabbit
Clonality:	Polyclonal
Application:	Western Blotting (WB)

### Product Details

Immunogen:	This ATP2A2 antibody is generated from rabbits immunized with a KLH conjugated synthetic peptide between 374-403 amino acids from the Central region of human ATP2A2.
Clone:	RB36768
Isotype:	Ig Fraction
Purification:	This antibody is purified through a protein A column, followed by peptide affinity purification.

### Target Details

Target:	ATP2A2
Alternative Name:	ATP2A2 ( <a href="#">ATP2A2 Products</a> )
Background:	This gene encodes one of the SERCA Ca(2+)-ATPases, which are intracellular pumps located in the sarcoplasmic or endoplasmic reticula of muscle cells. This enzyme catalyzes the hydrolysis of ATP coupled with the translocation of calcium from the cytosol into the sarcoplasmic

## Target Details

---

reticulum lumen, and is involved in regulation of the contraction/relaxation cycle. Mutations in this gene cause Darier-White disease, also known as keratosis follicularis, an autosomal dominant skin disorder characterized by loss of adhesion between epidermal cells and abnormal keratinization. Alternative splicing results in multiple transcript variants encoding different isoforms.

Molecular Weight:	114757
Gene ID:	488
NCBI Accession:	<a href="#">NP_001672</a> , <a href="#">NP_733765</a>
UniProt:	<a href="#">P16615</a>
Pathways:	<a href="#">Myometrial Relaxation and Contraction</a> , <a href="#">ER-Nucleus Signaling</a> , <a href="#">Ribonucleoside Biosynthetic Process</a>

## Application Details

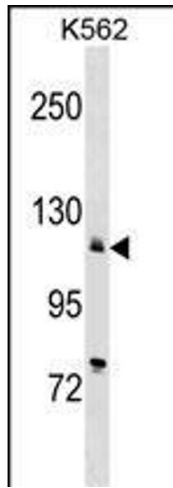
---

Application Notes:	WB: 1:1000
Restrictions:	For Research Use only

## Handling

---

Format:	Liquid
Buffer:	Purified polyclonal antibody supplied in PBS with 0.09 % (W/V) sodium azide.
Preservative:	Sodium azide
Precaution of Use:	This product contains Sodium azide: a POISONOUS AND HAZARDOUS SUBSTANCE which should be handled by trained staff only.
Storage:	4 °C,-20 °C
Storage Comment:	ATP2A2 Antibody (Center) can be refrigerated at 2-8 °C for up to 6 months. For long term storage, keep at -20 °C.
Expiry Date:	6 months



### Western Blotting

**Image 1.** ATP2A2 Antibody (Center) (ABIN1538370 and ABIN2848666) western blot analysis in K562 cell line lysates (35 µg/lane). This demonstrates the ATP2A2 antibody detected the ATP2A2 protein (arrow).