



[Go to Product page](#)

Datasheet for ABIN1538371
anti-IL1RAPL2 antibody (AA 376-405)

1 Image

Overview

Quantity:	400 µL
Target:	IL1RAPL2
Binding Specificity:	AA 376-405
Reactivity:	Human
Host:	Rabbit
Clonality:	Polyclonal
Conjugate:	This IL1RAPL2 antibody is un-conjugated
Application:	Western Blotting (WB)

Product Details

Immunogen:	This IL1RAPL2 antibody is generated from rabbits immunized with a KLH conjugated synthetic peptide between 376-405 amino acids from the Central region of human IL1RAPL2.
Clone:	RB36609
Isotype:	Ig Fraction
Purification:	This antibody is purified through a protein A column, followed by peptide affinity purification.

Target Details

Target:	IL1RAPL2
Alternative Name:	IL1RAPL2 (IL1RAPL2 Products)
Background:	The protein encoded by this gene is a member of the interleukin 1 receptor family. This protein

Target Details

is similar to the interleukin 1 accessory proteins, and is most closely related to interleukin 1 receptor accessory protein-like 1 (IL1RAPL1). This gene and IL1RAPL1 are located at a region on chromosome X that is associated with X-linked non-syndromic mental retardation.

Molecular Weight: 78670

Gene ID: 26280

NCBI Accession: [NP_059112](#)

UniProt: [Q9NP60](#)

Application Details

Application Notes: WB: 1:1000

Restrictions: For Research Use only

Handling

Format: Liquid

Buffer: Purified polyclonal antibody supplied in PBS with 0.09 % (W/V) sodium azide.

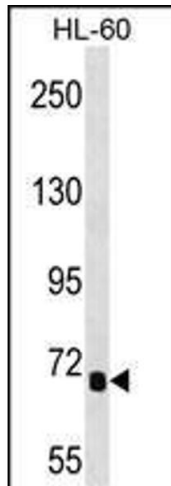
Preservative: Sodium azide

Precaution of Use: This product contains Sodium azide: a POISONOUS AND HAZARDOUS SUBSTANCE which should be handled by trained staff only.

Storage: 4 °C, -20 °C

Storage Comment: IL1RAPL2 Antibody (Center) can be refrigerated at 2-8 °C for up to 6 months. For long term storage, keep at -20 °C.

Expiry Date: 6 months



Western Blotting

Image 1. IL1RL2 Antibody (Center) 16964c western blot analysis in HL-60 cell line lysates (35 µg/lane). This demonstrates the IL1RL2 antibody detected the IL1RL2 protein (arrow).