

Datasheet for ABIN1538377
anti-RNPEP antibody (AA 381-411)[Go to Product page](#)

1 Image

Overview

Quantity:	400 µL
Target:	RNPEP
Binding Specificity:	AA 381-411
Reactivity:	Human
Host:	Rabbit
Clonality:	Polyclonal
Conjugate:	This RNPEP antibody is un-conjugated
Application:	Western Blotting (WB)

Product Details

Immunogen:	This RNPEP antibody is generated from rabbits immunized with a KLH conjugated synthetic peptide between 381-411 amino acids from the Central region of human RNPEP.
Clone:	RB37209
Isotype:	Ig Fraction
Predicted Reactivity:	M, Rat
Purification:	This antibody is purified through a protein A column, followed by peptide affinity purification.

Target Details

Target:	RNPEP
Alternative Name:	RNPEP (RNPEP Products)

Target Details

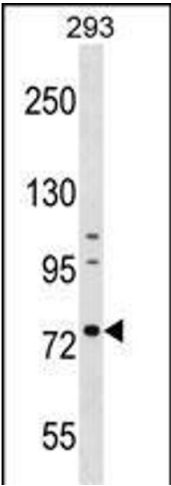
Background:	Exopeptidase which selectively removes arginine and/or lysine residues from the N-terminus of several peptide substrates including Arg(0)-Leu-enkephalin, Arg(0)-Met-enkephalin and Arg(-1)-Lys(0)-somatostatin-14. Can hydrolyze leukotriene A4 (LTA-4) into leukotriene B4 (LTB-4) (By similarity).
Molecular Weight:	72596
Gene ID:	6051
NCBI Accession:	NP_064601
UniProt:	Q9H4A4

Application Details

Application Notes:	WB: 1:1000
Restrictions:	For Research Use only

Handling

Format:	Liquid
Buffer:	Purified polyclonal antibody supplied in PBS with 0.09 % (W/V) sodium azide.
Preservative:	Sodium azide
Precaution of Use:	This product contains Sodium azide: a POISONOUS AND HAZARDOUS SUBSTANCE which should be handled by trained staff only.
Storage:	4 °C,-20 °C
Storage Comment:	RNPEP Antibody (Center) can be refrigerated at 2-8 °C for up to 6 months. For long term storage, keep at -20 °C.
Expiry Date:	6 months



Western Blotting

Image 1. RNPEP Antibody (Center) (ABIN1538377 and ABIN2848965) western blot analysis in 293 cell line lysates (35 µg/lane). This demonstrates the RNPEP antibody detected the RNPEP protein (arrow).