

Datasheet for ABIN1538381
anti-Ataxin 1-Like antibody (AA 385-411)[Go to Product page](#)

1 Image

Overview

Quantity:	400 µL
Target:	Ataxin 1-Like (ATXN1L)
Binding Specificity:	AA 385-411
Reactivity:	Human
Host:	Rabbit
Clonality:	Polyclonal
Conjugate:	This Ataxin 1-Like antibody is un-conjugated
Application:	Western Blotting (WB)

Product Details

Immunogen:	This ATXN1L antibody is generated from rabbits immunized with a KLH conjugated synthetic peptide between 385-411 amino acids from the Central region of human ATXN1L.
Clone:	RB38697
Isotype:	Ig Fraction
Predicted Reactivity:	M
Purification:	This antibody is purified through a protein A column, followed by peptide affinity purification.

Target Details

Target:	Ataxin 1-Like (ATXN1L)
Alternative Name:	ATXN1L (ATXN1L Products)

Target Details

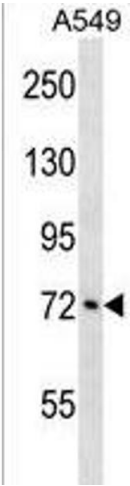
Background:	ATXN1L can suppress the cytotoxicity of ATXN1 in spinocerebellar ataxia type 1 (SCA1) (By similarity).
Molecular Weight:	73306
Gene ID:	342371
NCBI Accession:	NP_001131147
UniProt:	P0C7T5

Application Details

Application Notes:	WB: 1:1000
Restrictions:	For Research Use only

Handling

Format:	Liquid
Buffer:	Purified polyclonal antibody supplied in PBS with 0.09 % (W/V) sodium azide.
Preservative:	Sodium azide
Precaution of Use:	This product contains Sodium azide: a POISONOUS AND HAZARDOUS SUBSTANCE which should be handled by trained staff only.
Storage:	4 °C,-20 °C
Storage Comment:	ATXN1L Antibody (Center) can be refrigerated at 2-8 °C for up to 6 months. For long term storage, keep at -20 °C.
Expiry Date:	6 months



Western Blotting

Image 1. ATXN1L Antibody (Center) (ABIN1538381 and ABIN2850206) western blot analysis in A549 cell line lysates (35 µg/lane). This demonstrates the ATXN1L antibody detected the ATXN1L protein (arrow).