



[Go to Product page](#)

Datasheet for ABIN1538383
anti-ENO4 antibody (AA 388-414)

1 Image

Overview

Quantity:	400 µL
Target:	ENO4
Binding Specificity:	AA 388-414
Reactivity:	Human, Mouse
Host:	Rabbit
Clonality:	Polyclonal
Application:	Western Blotting (WB)

Product Details

Immunogen:	This ENO4 antibody is generated from rabbits immunized with a KLH conjugated synthetic peptide between 388-414 amino acids from the Central region of human ENO4.
Clone:	RB39173
Isotype:	Ig Fraction
Purification:	This antibody is purified through a protein A column, followed by peptide affinity purification.

Target Details

Target:	ENO4
Alternative Name:	ENO4 (ENO4 Products)
Background:	The function of this protein remains unknown.
Molecular Weight:	68465

Target Details

Gene ID: 387712

UniProt: [A6NNW6](#)

Application Details

Application Notes: WB: 1:1000

Restrictions: For Research Use only

Handling

Format: Liquid

Buffer: Purified polyclonal antibody supplied in PBS with 0.09 % (W/V) sodium azide.

Preservative: Sodium azide

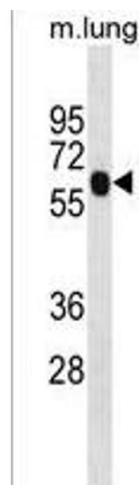
Precaution of Use: This product contains Sodium azide: a POISONOUS AND HAZARDOUS SUBSTANCE which should be handled by trained staff only.

Storage: 4 °C, -20 °C

Storage Comment: ENO4 Antibody (Center) can be refrigerated at 2-8 °C for up to 6 months. For long term storage, keep at -20 °C.

Expiry Date: 6 months

Images



Western Blotting

Image 1. ENO4 Antibody (Center) (ABIN1538383 and ABIN2850079) western blot analysis in mouse lung tissue lysates (35 µg/lane). This demonstrates the ENO4 antibody detected the ENO4 protein (arrow).