



Datasheet for ABIN1538386
anti-KLHL14 antibody (AA 392-418)



[Go to Product page](#)

1 Image

Overview

Quantity:	400 µL
Target:	KLHL14
Binding Specificity:	AA 392-418
Reactivity:	Human
Host:	Rabbit
Clonality:	Polyclonal
Conjugate:	This KLHL14 antibody is un-conjugated
Application:	Western Blotting (WB)

Product Details

Immunogen:	This KLHL14 antibody is generated from rabbits immunized with a KLH conjugated synthetic peptide between 392-418 amino acids from the Central region of human KLHL14.
Clone:	RB38280
Isotype:	Ig Fraction
Predicted Reactivity:	C, M
Purification:	This antibody is purified through a protein A column, followed by peptide affinity purification.

Target Details

Target:	KLHL14
Alternative Name:	KLHL14 (KLHL14 Products)

Target Details

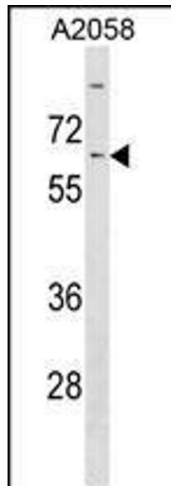
Background:	KLHL14 is a member of the KLHL family. The kelch motif was initially discovered in Kelch. In this protein there are six copies of the motif. It has been shown for one member that it is related to Galactose Oxidase for which a structure has been solved. Two isoforms of this protein exist - 70 kDa and 43 kDa.
Molecular Weight:	70714
Gene ID:	57565
NCBI Accession:	NP_065856
UniProt:	Q9P2G3

Application Details

Application Notes:	WB: 1:1000
Restrictions:	For Research Use only

Handling

Format:	Liquid
Buffer:	Purified polyclonal antibody supplied in PBS with 0.09 % (W/V) sodium azide.
Preservative:	Sodium azide
Precaution of Use:	This product contains Sodium azide: a POISONOUS AND HAZARDOUS SUBSTANCE which should be handled by trained staff only.
Storage:	4 °C,-20 °C
Storage Comment:	KLHL14 Antibody (Center) can be refrigerated at 2-8 °C for up to 6 months. For long term storage, keep at -20 °C.
Expiry Date:	6 months



Western Blotting

Image 1. KLHL14 Antibody (Center) (ABIN1538386 and ABIN2849976) western blot analysis in cell line lysates (35 µg/lane). This demonstrates the KLHL14 antibody detected the KLHL14 protein (arrow).