

Datasheet for ABIN1538387
anti-DHX36 antibody (AA 394-420)[Go to Product page](#)

1 Image

Overview

Quantity:	400 µL
Target:	DHX36
Binding Specificity:	AA 394-420
Reactivity:	Human
Host:	Rabbit
Clonality:	Polyclonal
Conjugate:	This DHX36 antibody is un-conjugated
Application:	Western Blotting (WB)

Product Details

Immunogen:	This DHX36 antibody is generated from rabbits immunized with a KLH conjugated synthetic peptide between 394-420 amino acids from the Central region of human DHX36.
Clone:	RB38749
Isotype:	Ig Fraction
Purification:	This antibody is purified through a protein A column, followed by peptide affinity purification.

Target Details

Target:	DHX36
Alternative Name:	DHX36 (DHX36 Products)
Background:	This gene is a member of the DEAH-box family of RNA-dependent NTPases which are named

Target Details

after the conserved amino acid sequence Asp-Glu-Ala-His in motif II. The protein encoded by this gene has been shown to enhance the deadenylation and decay of mRNAs with 3'-UTR AU-rich elements (ARE-mRNA). The protein has also been shown to resolve into single strands the highly stable tetramolecular DNA configuration (G4) that can form spontaneously in guanine-rich regions of DNA. Alternative splicing results in multiple transcript variants encoding different isoforms. [provided by RefSeq].

Molecular Weight: 114760

Gene ID: 170506

NCBI Accession: [NP_001107869](#), [NP_065916](#)

UniProt: [Q9H2U1](#)

Pathways: [Toll-Like Receptors Cascades](#)

Application Details

Application Notes: WB: 1:1000

Restrictions: For Research Use only

Handling

Format: Liquid

Buffer: Purified polyclonal antibody supplied in PBS with 0.09 % (W/V) sodium azide.

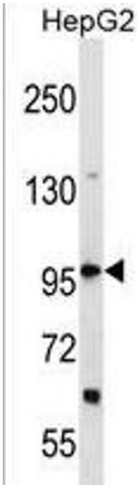
Preservative: Sodium azide

Precaution of Use: This product contains Sodium azide: a POISONOUS AND HAZARDOUS SUBSTANCE which should be handled by trained staff only.

Storage: 4 °C, -20 °C

Storage Comment: DHX36 Antibody (Center) can be refrigerated at 2-8 °C for up to 6 months. For long term storage, keep at -20 °C.

Expiry Date: 6 months



Western Blotting

Image 1. DHX36 Antibody (Center) (ABIN1538387 and ABIN2850215) western blot analysis in HepG2 cell line lysates (35 µg/lane). This demonstrates the DHX36 antibody detected the DHX36 protein (arrow).