

Datasheet for ABIN1538403
anti-UBE2H antibody (AA 42-70)[Go to Product page](#)

1 Image

Overview

Quantity:	400 µL
Target:	UBE2H
Binding Specificity:	AA 42-70
Reactivity:	Human
Host:	Rabbit
Clonality:	Polyclonal
Application:	Western Blotting (WB)

Product Details

Immunogen:	This UBE2H antibody is generated from rabbits immunized with a KLH conjugated synthetic peptide between 42-70 amino acids from the Central region of human UBE2H.
Clone:	RB36268
Isotype:	Ig Fraction
Predicted Reactivity:	B, M
Purification:	This antibody is purified through a protein A column, followed by peptide affinity purification.

Target Details

Target:	UBE2H
Alternative Name:	UBE2H (UBE2H Products)
Background:	The modification of proteins with ubiquitin is an important cellular mechanism for targeting

Target Details

abnormal or short-lived proteins for degradation. Ubiquitination involves at least three classes of enzymes: ubiquitin-activating enzymes, or E1s, ubiquitin-conjugating enzymes, or E2s, and ubiquitin-protein ligases, or E3s. This gene encodes a member of the E2 ubiquitin-conjugating enzyme family. The encoded protein sequence is 100 % identical to the mouse homolog and 98 % identical to the frog and zebrafish homologs. Two alternatively spliced transcript variants have been found for this gene and they encode distinct isoforms.

Molecular Weight: 20655

Gene ID: 7328

NCBI Accession: [NP_001189427](#), [NP_003335](#), [NP_874356](#)

UniProt: [P62256](#)

Application Details

Application Notes: WB: 1:1000

Restrictions: For Research Use only

Handling

Format: Liquid

Buffer: Purified polyclonal antibody supplied in PBS with 0.09 % (W/V) sodium azide.

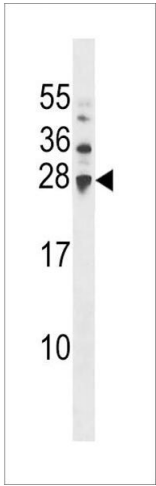
Preservative: Sodium azide

Precaution of Use: This product contains Sodium azide: a POISONOUS AND HAZARDOUS SUBSTANCE which should be handled by trained staff only.

Storage: 4 °C, -20 °C

Storage Comment: UBE2H Antibody (Center) can be refrigerated at 2-8 °C for up to 6 months. For long term storage, keep at -20 °C.

Expiry Date: 6 months



Western Blotting

Image 1. UBE2H Antibody (Center) (ABIN1538403 and ABIN2848590) western blot analysis in cell line lysates (35 µg/lane). This demonstrates the UBE2H antibody detected the UBE2H protein (arrow).