

Datasheet for ABIN1538407
anti-TBX2 antibody (AA 414-442)[Go to Product page](#)

1 Image

Overview

Quantity:	400 µL
Target:	TBX2
Binding Specificity:	AA 414-442
Reactivity:	Human
Host:	Rabbit
Clonality:	Polyclonal
Conjugate:	This TBX2 antibody is un-conjugated
Application:	Western Blotting (WB)

Product Details

Immunogen:	This TBX2 antibody is generated from rabbits immunized with a KLH conjugated synthetic peptide between 414-442 amino acids from the Central region of human TBX2.
Clone:	RB36737
Isotype:	Ig Fraction
Purification:	This antibody is purified through a protein A column, followed by peptide affinity purification.

Target Details

Target:	TBX2
Alternative Name:	TBX2 (TBX2 Products)
Background:	This gene is a member of a phylogenetically conserved family of genes that share a common

Target Details

DNA-binding domain, the T-box. T-box genes encode transcription factors involved in the regulation of developmental processes. This gene product is the human homolog of mouse Tbx2, and shares strong sequence similarity with Drosophila omb protein. Expression studies indicate that this gene may have a potential role in tumorigenesis as an immortalizing agent. Transcript heterogeneity due to alternative polyadenylation has been noted for this gene.

Molecular Weight: 75066

Gene ID: 6909

NCBI Accession: [NP_005985](#)

UniProt: [Q13207](#)

Pathways: [p53 Signaling](#)

Application Details

Application Notes: WB: 1:1000

Restrictions: For Research Use only

Handling

Format: Liquid

Buffer: Purified polyclonal antibody supplied in PBS with 0.09 % (W/V) sodium azide.

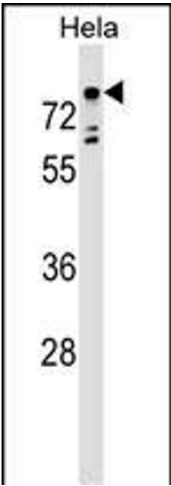
Preservative: Sodium azide

Precaution of Use: This product contains Sodium azide: a POISONOUS AND HAZARDOUS SUBSTANCE which should be handled by trained staff only.

Storage: 4 °C, -20 °C

Storage Comment: TBX2 Antibody (Center) can be refrigerated at 2-8 °C for up to 6 months. For long term storage, keep at -20 °C.

Expiry Date: 6 months



Western Blotting

Image 1. TBX2 Antibody (Center) (ABIN1538407 and ABIN2848835) western blot analysis in HeLa cell line lysates (35 µg/lane). This demonstrates the TBX2 antibody detected the TBX2 protein (arrow).