

Datasheet for ABIN1538416
anti-LRRC42 antibody (AA 44-71)[Go to Product page](#)

1 Image

Overview

Quantity:	400 µL
Target:	LRRC42
Binding Specificity:	AA 44-71
Reactivity:	Human
Host:	Rabbit
Clonality:	Polyclonal
Conjugate:	This LRRC42 antibody is un-conjugated
Application:	Western Blotting (WB)

Product Details

Immunogen:	This LRRC42 antibody is generated from rabbits immunized with a KLH conjugated synthetic peptide between 44-71 amino acids from the Central region of human LRRC42.
Clone:	RB21290
Isotype:	Ig Fraction
Purification:	This antibody is purified through a protein A column, followed by peptide affinity purification.

Target Details

Target:	LRRC42
Alternative Name:	LRRC42 (LRRC42 Products)
Background:	The specific function of this protein remains unknown. It contains 2 LRR (leucine-rich) repeats.

Target Details

Molecular Weight:	48571
Gene ID:	115353
NCBI Accession:	NP_001243338 , NP_443172
UniProt:	Q9Y546

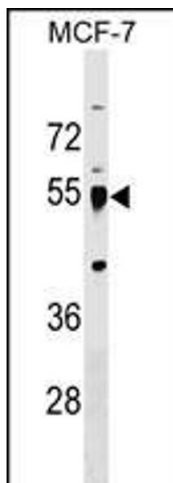
Application Details

Application Notes:	WB: 1:1000
Restrictions:	For Research Use only

Handling

Format:	Liquid
Buffer:	Purified polyclonal antibody supplied in PBS with 0.09 % (W/V) sodium azide.
Preservative:	Sodium azide
Precaution of Use:	This product contains Sodium azide: a POISONOUS AND HAZARDOUS SUBSTANCE which should be handled by trained staff only.
Storage:	4 °C, -20 °C
Storage Comment:	LRRC42 Antibody (Center) can be refrigerated at 2-8 °C for up to 6 months. For long term storage, keep at -20 °C.
Expiry Date:	6 months

Images



Western Blotting

Image 1. LRRC42 Antibody (Center) (ABIN1538416 and ABIN2849496) western blot analysis in MCF-7 cell line lysates (35 µg/lane). This demonstrates the LRRC42 antibody detected the LRRC42 protein (arrow).