



[Go to Product page](#)

Datasheet for ABIN1538417
anti-IGF2AS antibody (AA 44-73)

1 Image

Overview

Quantity:	400 µL
Target:	IGF2AS (IGF2-AS)
Binding Specificity:	AA 44-73
Reactivity:	Human
Host:	Rabbit
Clonality:	Polyclonal
Conjugate:	This IGF2AS antibody is un-conjugated
Application:	Western Blotting (WB)

Product Details

Immunogen:	This IGF2AS antibody is generated from rabbits immunized with a KLH conjugated synthetic peptide between 44-73 amino acids from the Central region of human IGF2AS.
Clone:	RB34180
Isotype:	Ig Fraction
Purification:	This antibody is purified through a protein A column, followed by peptide affinity purification.

Target Details

Target:	IGF2AS (IGF2-AS)
Alternative Name:	IGF2AS (IGF2-AS Products)
Background:	The insulin-like growth factors possess growth-promoting activity. In vitro, they are potent

Target Details

mitogens for cultured cells. IGF-II is influenced by placental lactogen and may play a role in fetal development. Preptin undergoes glucose-mediated co-secretion with insulin, and acts as physiological amplifier of glucose-mediated insulin secretion. Exhibits osteogenic properties by increasing osteoblast mitogenic activity through phosphoactivation of MAPK1 and MAPK3.

Molecular Weight: 18035

Gene ID: 51214

UniProt: [Q6U949](#)

Application Details

Application Notes: WB: 1:1000

Restrictions: For Research Use only

Handling

Format: Liquid

Buffer: Purified polyclonal antibody supplied in PBS with 0.09 % (W/V) sodium azide.

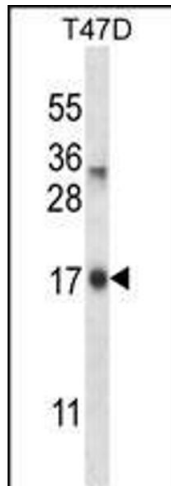
Preservative: Sodium azide

Precaution of Use: This product contains Sodium azide: a POISONOUS AND HAZARDOUS SUBSTANCE which should be handled by trained staff only.

Storage: 4 °C,-20 °C

Storage Comment: IGF2AS Antibody (Center) can be refrigerated at 2-8 °C for up to 6 months. For long term storage, keep at -20 °C.

Expiry Date: 6 months



Western Blotting

Image 1. IGF2AS Antibody (Center) (ABIN1538417 and ABIN2849334) western blot analysis in T47D cell line lysates (35 µg/lane). This demonstrates the IGF2AS antibody detected the IGF2AS protein (arrow).