

Datasheet for ABIN1538422
anti-TBC1D2 antibody (AA 438-465)[Go to Product page](#)

1 Image

Overview

Quantity:	400 µL
Target:	TBC1D2
Binding Specificity:	AA 438-465
Reactivity:	Human, Mouse
Host:	Rabbit
Clonality:	Polyclonal
Conjugate:	This TBC1D2 antibody is un-conjugated
Application:	Western Blotting (WB)

Product Details

Immunogen:	This TBC1D2 antibody is generated from rabbits immunized with a KLH conjugated synthetic peptide between 438-465 amino acids from the Central region of human TBC1D2.
Clone:	RB38423
Isotype:	Ig Fraction
Purification:	This antibody is purified through a protein A column, followed by peptide affinity purification.

Target Details

Target:	TBC1D2
Alternative Name:	TBC1D2 (TBC1D2 Products)
Background:	TBC1D2 acts as GTPase-activating protein for RAB7A. Signal effector acting as a linker

Target Details

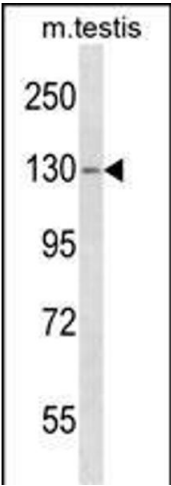
	between RAC1 and RAB7A, leading to RAB7A inactivation and subsequent inhibition of cadherin degradation and reduced cell-cell adhesion.
Molecular Weight:	105414
Gene ID:	55357
NCBI Accession:	NP_001254500 , NP_001254501 , NP_060891
UniProt:	Q9BYX2

Application Details

Application Notes:	WB: 1:1000
Restrictions:	For Research Use only

Handling

Format:	Liquid
Buffer:	Purified polyclonal antibody supplied in PBS with 0.09 % (W/V) sodium azide.
Preservative:	Sodium azide
Precaution of Use:	This product contains Sodium azide: a POISONOUS AND HAZARDOUS SUBSTANCE which should be handled by trained staff only.
Storage:	4 °C,-20 °C
Storage Comment:	TBC1D2 Antibody (Center) can be refrigerated at 2-8 °C for up to 6 months. For long term storage, keep at -20 °C.
Expiry Date:	6 months



Western Blotting

Image 1. TBC1D2 Antibody (Center) (ABIN1538422 and ABIN2850064) western blot analysis in mouse testis tissue lysates (35 µg/lane). This demonstrates the TBC1D2 antibody detected the TBC1D2 protein (arrow).