

Datasheet for ABIN1538424
anti-Prominin 2 antibody (AA 440-466)[Go to Product page](#)

1 Image

Overview

Quantity:	400 µL
Target:	Prominin 2 (PROM2)
Binding Specificity:	AA 440-466
Reactivity:	Human
Host:	Rabbit
Clonality:	Polyclonal
Application:	Western Blotting (WB)

Product Details

Immunogen:	This PROM2 antibody is generated from rabbits immunized with a KLH conjugated synthetic peptide between 440-466 amino acids from the Central region of human PROM2.
Clone:	RB37968
Isotype:	Ig Fraction
Purification:	This antibody is purified through a protein A column, followed by peptide affinity purification.

Target Details

Target:	Prominin 2 (PROM2)
Alternative Name:	PROM2 (PROM2 Products)
Background:	<p>This gene encodes a member of the prominin family of pentaspan membrane glycoproteins.</p> <p>The encoded protein localizes to basal epithelial cells and may be involved in the organization of plasma membrane microdomains. Alternative splicing results in multiple transcript variants.</p>

Target Details

Molecular Weight:	91883
Gene ID:	150696
NCBI Accession:	NP_001159449 , NP_001159450 , NP_653308
UniProt:	Q8N271

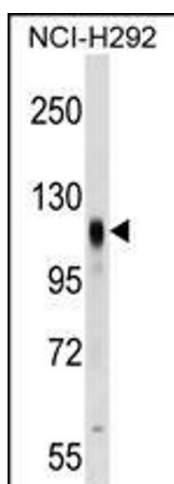
Application Details

Application Notes:	WB: 1:1000
Restrictions:	For Research Use only

Handling

Format:	Liquid
Buffer:	Purified polyclonal antibody supplied in PBS with 0.09 % (W/V) sodium azide.
Preservative:	Sodium azide
Precaution of Use:	This product contains Sodium azide: a POISONOUS AND HAZARDOUS SUBSTANCE which should be handled by trained staff only.
Storage:	4 °C, -20 °C
Storage Comment:	PROM2 Antibody (Center) can be refrigerated at 2-8 °C for up to 6 months. For long term storage, keep at -20 °C.
Expiry Date:	6 months

Images



Western Blotting

Image 1. PROM2 Antibody (Center) (ABIN1538424 and ABIN2849372) western blot analysis in NCI- cell line lysates (35 µg/lane). This demonstrates the PROM2 antibody detected the PROM2 protein (arrow).