



[Go to Product page](#)

Datasheet for ABIN1538435
anti-PPP1R9A antibody (AA 455-484)

1 Image

Overview

Quantity:	400 µL
Target:	PPP1R9A
Binding Specificity:	AA 455-484
Reactivity:	Human
Host:	Rabbit
Clonality:	Polyclonal
Conjugate:	This PPP1R9A antibody is un-conjugated
Application:	Western Blotting (WB)

Product Details

Immunogen:	This PPP1R9A antibody is generated from rabbits immunized with a KLH conjugated synthetic peptide between 455-484 amino acids from the Central region of human PPP1R9A.
Clone:	RB39348
Isotype:	Ig Fraction
Purification:	This antibody is purified through a protein A column, followed by peptide affinity purification.

Target Details

Target:	PPP1R9A
Alternative Name:	PPP1R9A (PPP1R9A Products)
Background:	This gene is imprinted, and located in a cluster of imprinted genes on chromosome 7q12. This

Target Details

gene is transcribed in both neuronal and multiple embryonic tissues, and it is maternally expressed mainly in embryonic skeletal muscle tissues and biallelically expressed in other embryonic tissues. The protein encoded by this gene includes a PDZ domain and a sterile alpha motif (SAM). It is a regulatory subunit of protein phosphatase I, and controls actin cytoskeleton reorganization. Alternatively spliced transcript variants encoding different isoforms have been found for this gene.

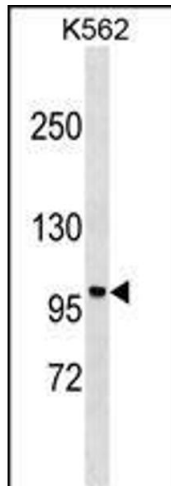
Molecular Weight:	123342
Gene ID:	55607
NCBI Accession:	NP_001159632 , NP_001159633 , NP_001159634 , NP_001159635 , NP_060120
UniProt:	Q9ULJ8

Application Details

Application Notes:	WB: 1:1000
Restrictions:	For Research Use only

Handling

Format:	Liquid
Buffer:	Purified polyclonal antibody supplied in PBS with 0.09 % (W/V) sodium azide.
Preservative:	Sodium azide
Precaution of Use:	This product contains Sodium azide: a POISONOUS AND HAZARDOUS SUBSTANCE which should be handled by trained staff only.
Storage:	4 °C, -20 °C
Storage Comment:	PPP1R9A Antibody (Center) can be refrigerated at 2-8 °C for up to 6 months. For long term storage, keep at -20 °C.
Expiry Date:	6 months



Western Blotting

Image 1. P1R9A Antibody (Center) (ABIN1538435 and ABIN2850236) western blot analysis in K562 cell line lysates (35 µg/lane). This demonstrates the P1R9A antibody detected the P1R9A protein (arrow).