

Datasheet for ABIN1538438  
**anti-PTGFRN antibody (AA 458-485)**[Go to Product page](#)

## 1 Image

## Overview

Quantity:	400 µL
Target:	PTGFRN
Binding Specificity:	AA 458-485
Reactivity:	Human, Mouse
Host:	Rabbit
Clonality:	Polyclonal
Application:	Western Blotting (WB)

## Product Details

Immunogen:	This PTGFRN antibody is generated from rabbits immunized with a KLH conjugated synthetic peptide between 458-485 amino acids from the Central region of human PTGFRN.
Clone:	RB37534
Isotype:	Ig Fraction
Purification:	This antibody is purified through a protein A column, followed by peptide affinity purification.

## Target Details

Target:	PTGFRN
Alternative Name:	PTGFRN ( <a href="#">PTGFRN Products</a> )
Background:	PTGFRN inhibits the binding of prostaglandin F2-alpha (PGF2-alpha) to its specific FP receptor, by decreasing the receptor number rather than the affinity constant. Functional coupling with the prostaglandin F2-alpha receptor seems to occur (By similarity).

### Target Details

Molecular Weight:	98556
Gene ID:	5738
NCBI Accession:	<a href="#">NP_065173</a>
UniProt:	<a href="#">Q9P2B2</a>

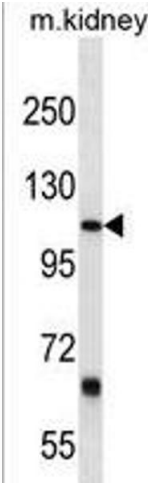
### Application Details

Application Notes:	WB: 1:1000
Restrictions:	For Research Use only

### Handling

Format:	Liquid
Buffer:	Purified polyclonal antibody supplied in PBS with 0.09 % (W/V) sodium azide.
Preservative:	Sodium azide
Precaution of Use:	This product contains Sodium azide: a POISONOUS AND HAZARDOUS SUBSTANCE which should be handled by trained staff only.
Storage:	4 °C,-20 °C
Storage Comment:	PTGFRN Antibody (Center) can be refrigerated at 2-8 °C for up to 6 months. For long term storage, keep at -20 °C.
Expiry Date:	6 months

### Images



#### Western Blotting

**Image 1.** PTGFRN Antibody (Center) (ABIN1538438 and ABIN2849958) western blot analysis in mouse kidney tissue lysates (35 µg/lane). This demonstrates the PTGFRN antibody detected the PTGFRN protein (arrow).