

Datasheet for ABIN1538439
anti-HBS1L antibody (AA 460-486)[Go to Product page](#)

4 Images

Overview

Quantity:	400 µL
Target:	HBS1L
Binding Specificity:	AA 460-486
Reactivity:	Human, Mouse
Host:	Rabbit
Clonality:	Polyclonal
Conjugate:	This HBS1L antibody is un-conjugated
Application:	Western Blotting (WB)

Product Details

Immunogen:	This HBS1L antibody is generated from rabbits immunized with a KLH conjugated synthetic peptide between 460-486 amino acids from the Central region of human HBS1L.
Clone:	RB38809
Isotype:	Ig Fraction
Predicted Reactivity:	B, Rat
Purification:	This antibody is purified through a protein A column, followed by peptide affinity purification.

Target Details

Target:	HBS1L
Alternative Name:	HBS1L (HBS1L Products)

Target Details

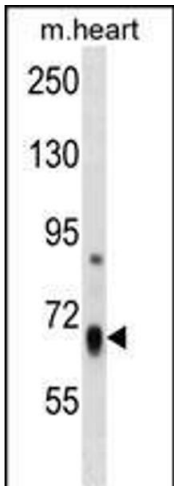
Target Type:	Viral Protein
Background:	This gene encodes a member of the GTP-binding elongation factor family. It is expressed in multiple tissues with the highest expression in heart and skeletal muscle. The intergenic region of this gene and the MYB gene has been identified to be a quantitative trait locus (QTL) controlling fetal hemoglobin level, and this region influences erythrocyte, platelet, and monocyte counts as well as erythrocyte volume and hemoglobin content. DNA polymorphisms at this region associate with fetal hemoglobin levels and pain crises in sickle cell disease. A single nucleotide polymorphism in exon 1 of this gene is significantly associated with severity in beta-thalassemia/Hemoglobin E. Multiple alternatively spliced transcript variants encoding different protein isoforms have been found for this gene.
Molecular Weight:	75473
Gene ID:	10767
NCBI Accession:	NP_001138630 , NP_001138679 , NP_006611
UniProt:	Q9Y450

Application Details

Application Notes:	WB: 1:2000. WB: 1:2000. WB: 1:2000. WB: 1:1000
Restrictions:	For Research Use only

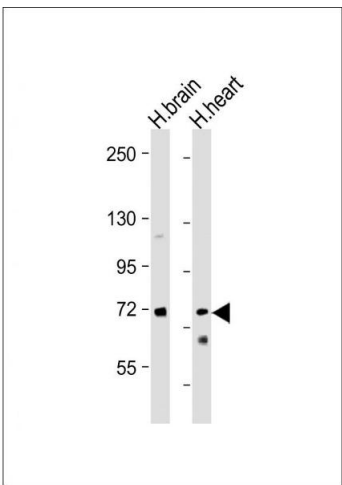
Handling

Format:	Liquid
Buffer:	Purified polyclonal antibody supplied in PBS with 0.09 % (W/V) sodium azide.
Preservative:	Sodium azide
Precaution of Use:	This product contains Sodium azide: a POISONOUS AND HAZARDOUS SUBSTANCE which should be handled by trained staff only.
Storage:	4 °C,-20 °C
Storage Comment:	HBS1L Antibody (Center) can be refrigerated at 2-8 °C for up to 6 months. For long term storage, keep at -20 °C.
Expiry Date:	6 months



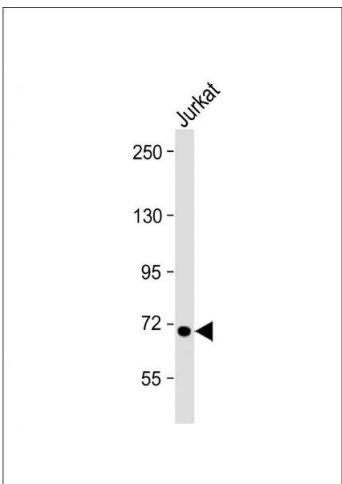
Western Blotting

Image 1. HBS1L Antibody (Center) (ABIN1538439 and ABIN2850035) western blot analysis in mouse heart tissue lysates (35 µg/lane). This demonstrates the HBS1L antibody detected the HBS1L protein (arrow).



Western Blotting

Image 2. All lanes : Anti-HBS1L Antibody (Center) at 1:2000 dilution Lane 1: Human brain lysate Lane 2: Human heart lysate Lysates/proteins at 20 µg per lane. Secondary Goat Anti-Rabbit IgG, (H+L), Peroxidase conjugated at 1/10000 dilution. Predicted band size : 75 kDa Blocking/Dilution buffer: 5 % NFDM/TBST.



Western Blotting

Image 3. Anti-HBS1L Antibody (Center) at 1:2000 dilution + Jurkat whole cell lysate Lysates/proteins at 20 µg per lane. Secondary Goat Anti-Rabbit IgG, (H+L), Peroxidase conjugated at 1/10000 dilution. Predicted band size : 75 kDa Blocking/Dilution buffer: 5 % NFDM/TBST.

Please check the [product details page](#) for more images. Overall 4 images are available for ABIN1538439.