

Datasheet for ABIN1538445
anti-Prolactin antibody (AA 48-76)[Go to Product page](#)

3 Images

Overview

Quantity:	400 µL
Target:	Prolactin (PRL)
Binding Specificity:	AA 48-76
Reactivity:	Human
Host:	Rabbit
Clonality:	Polyclonal
Conjugate:	This Prolactin antibody is un-conjugated
Application:	Western Blotting (WB), Immunohistochemistry (Paraffin-embedded Sections) (IHC (p))

Product Details

Immunogen:	This PRL antibody is generated from rabbits immunized with a KLH conjugated synthetic peptide between 48-76 amino acids from the Central region of human PRL.
Clone:	RB36501
Isotype:	Ig Fraction
Purification:	This antibody is purified through a protein A column, followed by peptide affinity purification.

Target Details

Target:	Prolactin (PRL)
Alternative Name:	PRL (PRL Products)
Background:	PRL prolactin acts primarily on the mammary gland by promoting lactation.

Target Details

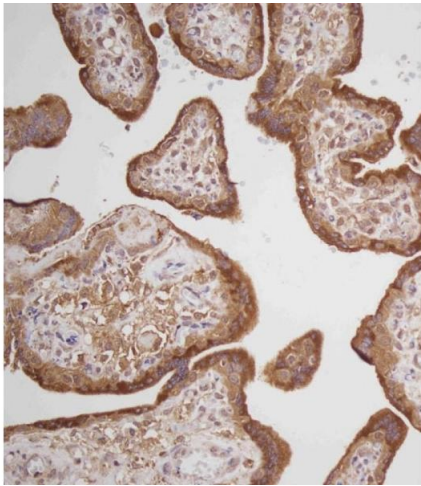
Molecular Weight:	25876
Gene ID:	5617
NCBI Accession:	NP_000939 , NP_001157030
UniProt:	P01236
Pathways:	JAK-STAT Signaling , Peptide Hormone Metabolism , Response to Growth Hormone Stimulus , Protein targeting to Nucleus

Application Details

Application Notes:	WB: 1:1000. IHC-P: 1:100. IHC-P: 1:100
Restrictions:	For Research Use only

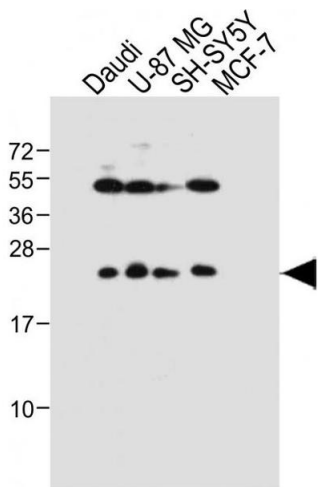
Handling

Format:	Liquid
Buffer:	Purified polyclonal antibody supplied in PBS with 0.09 % (W/V) sodium azide.
Preservative:	Sodium azide
Precaution of Use:	This product contains Sodium azide: a POISONOUS AND HAZARDOUS SUBSTANCE which should be handled by trained staff only.
Storage:	4 °C,-20 °C
Storage Comment:	PRL Antibody (Center) can be refrigerated at 2-8 °C for up to 6 months. For long term storage, keep at -20 °C.
Expiry Date:	6 months



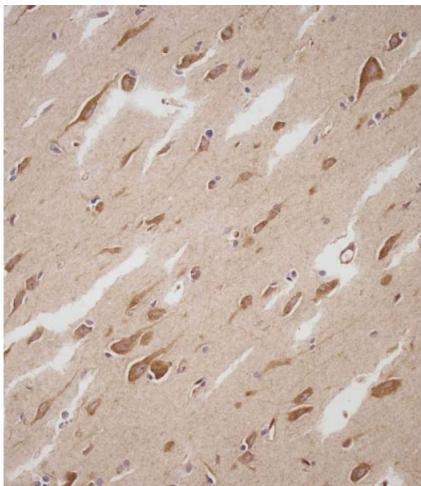
Immunohistochemistry (Paraffin-embedded Sections)

Image 1. Immunohistochemical analysis of C on paraffin-embedded Human placenta tissue. Tissue was fixed with formaldehyde at room temperature. Heat induced epitope retrieval was performed by EDTA buffer (pH 9. 0). Samples were incubated with primary Antibody (1:100) for 1 hour at room temperature. Undiluted CRF Anti-Polyvalent HRP Polymer antibody was used as the secondary antibody.



Western Blotting

Image 2. All lanes : Anti-PRL Antibody (Center) at 1:1000 dilution Lane 1: Daudi whole cell lysate Lane 2: U-87 MG whole cell lysate Lane 3: SH-SY5Y whole cell lysate Lane 4: MCF-7 whole cell lysate Lysates/proteins at 20 µg per lane. Secondary Goat Anti-Rabbit IgG, (H+L), Peroxidase conjugated at 1/10000 dilution. Predicted band size : 26 kDa Blocking/Dilution buffer: 5 % NFDM/TBST.



Immunohistochemistry (Paraffin-embedded Sections)

Image 3. Immunohistochemical analysis of C on paraffin-embedded Human brain tissue. Tissue was fixed with formaldehyde at room temperature. Heat induced epitope retrieval was performed by EDTA buffer (pH 9. 0). Samples were incubated with primary Antibody (1:100) for 1 hour at room temperature. Undiluted CRF Anti-Polyvalent HRP Polymer antibody was used as the secondary antibody.