



[Go to Product page](#)

Datasheet for ABIN1538451
anti-POLR2D antibody (AA 51-79)

2 Images

Overview

Quantity:	400 µL
Target:	POLR2D
Binding Specificity:	AA 51-79
Reactivity:	Human
Host:	Rabbit
Clonality:	Polyclonal
Conjugate:	This POLR2D antibody is un-conjugated
Application:	Western Blotting (WB)

Product Details

Immunogen:	This POLR2D antibody is generated from rabbits immunized with a KLH conjugated synthetic peptide between 51-79 amino acids from the Central region of human POLR2D.
Clone:	RB36831
Isotype:	Ig Fraction
Predicted Reactivity:	M
Purification:	This antibody is purified through a protein A column, followed by peptide affinity purification.

Target Details

Target:	POLR2D
Alternative Name:	POLR2D (POLR2D Products)

Target Details

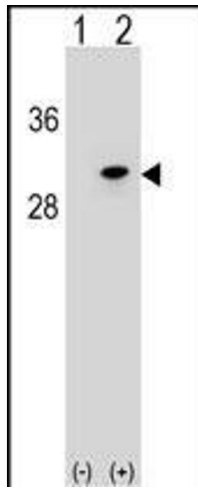
Background:	This gene encodes the fourth largest subunit of RNA polymerase II, the polymerase responsible for synthesizing messenger RNA in eukaryotes. In yeast, this polymerase subunit is associated with the polymerase under suboptimal growth conditions and may have a stress protective role. A sequence for a ribosomal pseudogene is contained within the 3' untranslated region of the transcript from this gene.
Molecular Weight:	16311
Gene ID:	5433
NCBI Accession:	NP_004796
UniProt:	O15514
Pathways:	Regulatory RNA Pathways

Application Details

Application Notes:	WB: 1:1000. WB: 1:1000
Restrictions:	For Research Use only

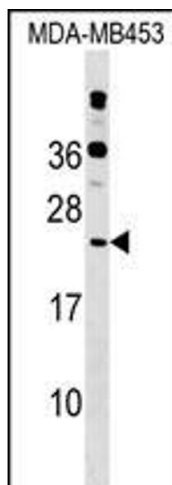
Handling

Format:	Liquid
Buffer:	Purified polyclonal antibody supplied in PBS with 0.09 % (W/V) sodium azide.
Preservative:	Sodium azide
Precaution of Use:	This product contains Sodium azide: a POISONOUS AND HAZARDOUS SUBSTANCE which should be handled by trained staff only.
Storage:	4 °C, -20 °C
Storage Comment:	POLR2D Antibody (Center) can be refrigerated at 2-8 °C for up to 6 months. For long term storage, keep at -20 °C.
Expiry Date:	6 months



Western Blotting

Image 1. Western blot analysis of POLR2D (arrow) using rabbit polyclonal POLR2D Antibody (Center) (ABIN1538451 and ABIN2848853). 293 cell lysates (2 µg/lane) either nontransfected (Lane 1) or transiently transfected (Lane 2) with the POLR2D gene.



Western Blotting

Image 2. POLR2D Antibody (Center) (ABIN1538451 and ABIN2848853) western blot analysis in MDA-M cell line lysates (35 µg/lane). This demonstrates the POLR2D antibody detected the POLR2D protein (arrow).