

Datasheet for ABIN1538452
anti-MASP1 antibody (AA 481-507)[Go to Product page](#)

1 Image

Overview

Quantity:	400 µL
Target:	MASP1
Binding Specificity:	AA 481-507
Reactivity:	Human
Host:	Rabbit
Clonality:	Polyclonal
Application:	Western Blotting (WB)

Product Details

Immunogen:	This MASP1 antibody is generated from rabbits immunized with a KLH conjugated synthetic peptide between 481-507 amino acids from the Central region of human MASP1.
Clone:	RB22401
Isotype:	Ig Fraction
Purification:	This antibody is purified through a protein A column, followed by peptide affinity purification.

Target Details

Target:	MASP1
Alternative Name:	MASP1 (MASP1 Products)
Background:	This gene encodes a serine protease that functions as a component of the lectin pathway of complement activation. The complement pathway plays an essential role in the innate and adaptive immune response. The encoded protein is synthesized as a zymogen and is activated

Target Details

when it complexes with the pathogen recognition molecules of lectin pathway, the mannose-binding lectin and the ficolins. This protein is not directly involved in complement activation but may play a role as an amplifier of complement activation by cleaving complement C2 or by activating another complement serine protease, MASP-2. The encoded protein is also able to cleave fibrinogen and factor XIII and may may be involved in coagulation. A splice variant of this gene which lacks the serine protease domain functions as an inhibitor of the complement pathway. Alternate splicing results in multiple transcript variants.

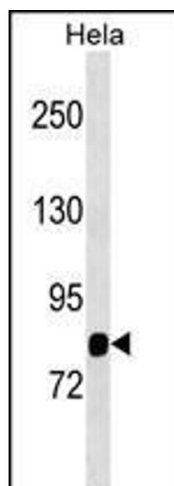
Molecular Weight:	79247
Gene ID:	5648
NCBI Accession:	NP_001027019 , NP_001870 , NP_624302
UniProt:	P48740
Pathways:	Complement System

Application Details

Application Notes:	WB: 1:1000
Restrictions:	For Research Use only

Handling

Format:	Liquid
Buffer:	Purified polyclonal antibody supplied in PBS with 0.09 % (W/V) sodium azide.
Preservative:	Sodium azide
Precaution of Use:	This product contains Sodium azide: a POISONOUS AND HAZARDOUS SUBSTANCE which should be handled by trained staff only.
Storage:	4 °C,-20 °C
Storage Comment:	MASP1 Antibody (Center) can be refrigerated at 2-8 °C for up to 6 months. For long term storage, keep at -20 °C.
Expiry Date:	6 months



Western Blotting

Image 1. SP1 Antibody (Center) (ABIN1538452 and ABIN2849636) western blot analysis in HeLa cell line lysates (35 µg/lane). This demonstrates the SP1 antibody detected the SP1 protein (arrow).