



[Go to Product page](#)

Datasheet for ABIN1538453
anti-SCUBE3 antibody (AA 480-509)

2 Images

Overview

Quantity:	400 µL
Target:	SCUBE3
Binding Specificity:	AA 480-509
Reactivity:	Human, Mouse
Host:	Rabbit
Clonality:	Polyclonal
Conjugate:	This SCUBE3 antibody is un-conjugated
Application:	Western Blotting (WB)

Product Details

Immunogen:	This SCUBE3 antibody is generated from rabbits immunized with a KLH conjugated synthetic peptide between 480-509 amino acids from the Central region of human SCUBE3.
Clone:	RB39797
Isotype:	Ig Fraction
Purification:	This antibody is purified through a protein A column, followed by peptide affinity purification.

Target Details

Target:	SCUBE3
Alternative Name:	SCUBE3 (SCUBE3 Products)
Background:	SCUBE3 contains one CUB domain and 9 EGF-like domains. It is highly expressed in primary

Target Details

osteoblasts and the long bones (humerus and femur) and expression is low or absent in non-bone tissues. It may play an important role in bone cell biology.

Molecular Weight: 109282

Gene ID: 222663

NCBI Accession: [NP_689966](#)

UniProt: [Q8IX30](#)

Application Details

Application Notes: WB: 1:1000. WB: 1:1000

Restrictions: For Research Use only

Handling

Format: Liquid

Buffer: Purified polyclonal antibody supplied in PBS with 0.09 % (W/V) sodium azide.

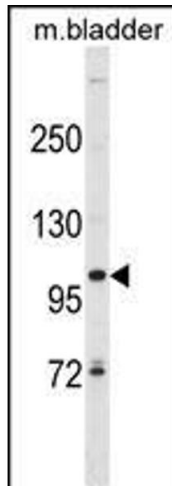
Preservative: Sodium azide

Precaution of Use: This product contains Sodium azide: a POISONOUS AND HAZARDOUS SUBSTANCE which should be handled by trained staff only.

Storage: 4 °C,-20 °C

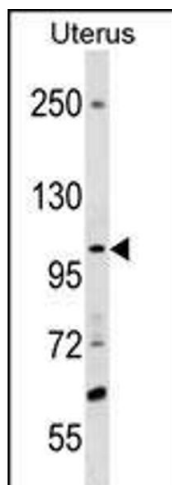
Storage Comment: SCUBE3 Antibody (Center) can be refrigerated at 2-8 °C for up to 6 months. For long term storage, keep at -20 °C.

Expiry Date: 6 months



Western Blotting

Image 1. SCUBE3 Antibody (Center) (ABIN1538453 and ABIN2838104) western blot analysis in mouse bladder tissue lysates (35 µg/lane). This demonstrates the SCUBE3 antibody detected the SCUBE3 protein (arrow).



Western Blotting

Image 2. SCUBE3 Antibody (Center) (ABIN1538453 and ABIN2838104) western blot analysis in Uterus tissue lysates (35 µg/lane). This demonstrates the SCUBE3 antibody detected the SCUBE3 protein (arrow).