

Datasheet for ABIN1538454
anti-GPRC6A antibody (AA 489-517)[Go to Product page](#)

1 Image

Overview

Quantity:	400 µL
Target:	GPRC6A
Binding Specificity:	AA 489-517
Reactivity:	Human
Host:	Rabbit
Clonality:	Polyclonal
Conjugate:	This GPRC6A antibody is un-conjugated
Application:	Western Blotting (WB)

Product Details

Immunogen:	This GPRC6A antibody is generated from rabbits immunized with a KLH conjugated synthetic peptide between 489-517 amino acids from the Central region of human GPRC6A.
Clone:	RB39362
Isotype:	Ig Fraction
Purification:	This antibody is purified through a protein A column, followed by peptide affinity purification.

Target Details

Target:	GPRC6A
Alternative Name:	GPRC6A (GPRC6A Products)
Background:	Members of family C of the G protein-coupled receptor (GPCR) superfamily, such as GPRC6A,

Target Details

are characterized by an evolutionarily conserved amino acid-sensing motif linked to an intramembranous 7-transmembrane loop region. Several members of GPCR family C, including GPRC6A, also have a long N-terminal domain (summary by Pi et al., 2005 [PubMed 16199532]).

Molecular Weight: 104753

Gene ID: 222545

NCBI Accession: [NP_683766](#)

UniProt: [Q5T6X5](#)

Application Details

Application Notes: WB: 1:1000

Restrictions: For Research Use only

Handling

Format: Liquid

Buffer: Purified polyclonal antibody supplied in PBS with 0.09 % (W/V) sodium azide.

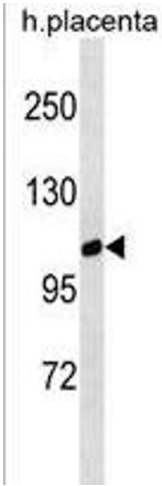
Preservative: Sodium azide

Precaution of Use: This product contains Sodium azide: a POISONOUS AND HAZARDOUS SUBSTANCE which should be handled by trained staff only.

Storage: 4 °C, -20 °C

Storage Comment: GPRC6A Antibody (Center) can be refrigerated at 2-8 °C for up to 6 months. For long term storage, keep at -20 °C.

Expiry Date: 6 months



Western Blotting

Image 1. GPRC6A Antibody (Center) (ABIN1538454 and ABIN2850240) western blot analysis in human placenta tissue lysates (35 µg/lane). This demonstrates the GPRC6A antibody detected the GPRC6A protein (arrow).