

Datasheet for ABIN1538455
anti-MRPS23 antibody (AA 50-76)[Go to Product page](#)

1 Image

Overview

| | |
|----------------------|---------------------------------------|
| Quantity: | 400 µL |
| Target: | MRPS23 |
| Binding Specificity: | AA 50-76 |
| Reactivity: | Human |
| Host: | Rabbit |
| Clonality: | Polyclonal |
| Conjugate: | This MRPS23 antibody is un-conjugated |
| Application: | Western Blotting (WB) |

Product Details

| | |
|---------------|---|
| Immunogen: | This MRPS23 antibody is generated from rabbits immunized with a KLH conjugated synthetic peptide between 50-76 amino acids from the Central region of human MRPS23. |
| Clone: | RB37597 |
| Isotype: | Ig Fraction |
| Purification: | This antibody is purified through a protein A column, followed by peptide affinity purification. |

Target Details

| | |
|-------------------|---|
| Target: | MRPS23 |
| Alternative Name: | MRPS23 (MRPS23 Products) |
| Background: | Mammalian mitochondrial ribosomal proteins are encoded by nuclear genes and help in protein |

Target Details

synthesis within the mitochondrion. Mitochondrial ribosomes (mitoribosomes) consist of a small 28S subunit and a large 39S subunit. They have an estimated 75 % protein to rRNA composition compared to prokaryotic ribosomes, where this ratio is reversed. Another difference between mammalian mitoribosomes and prokaryotic ribosomes is that the latter contain a 5S rRNA. Among different species, the proteins comprising the mitoribosome differ greatly in sequence, and sometimes in biochemical properties, which prevents easy recognition by sequence homology. This gene encodes a 28S subunit protein. A pseudogene corresponding to this gene is found on chromosome 7p. [provided by RefSeq].

Molecular Weight: 21771

Gene ID: 51649

NCBI Accession: [NP_057154](#)

UniProt: [Q9Y3D9](#)

Application Details

Application Notes: WB: 1:1000

Restrictions: For Research Use only

Handling

Format: Liquid

Buffer: Purified polyclonal antibody supplied in PBS with 0.09 % (W/V) sodium azide.

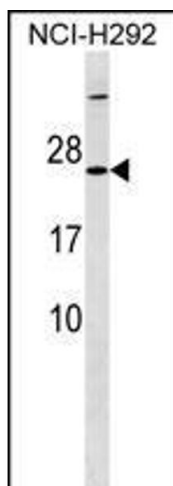
Preservative: Sodium azide

Precaution of Use: This product contains Sodium azide: a POISONOUS AND HAZARDOUS SUBSTANCE which should be handled by trained staff only.

Storage: 4 °C, -20 °C

Storage Comment: MRPS23 Antibody (Center) can be refrigerated at 2-8 °C for up to 6 months. For long term storage, keep at -20 °C.

Expiry Date: 6 months



Western Blotting

Image 1. MRPS23 Antibody (Center) (ABIN1538455 and ABIN2849850) western blot analysis in NCI- cell line lysates (35 µg/lane). This demonstrates the MRPS23 Antibody detected the MRPS23 protein (arrow).