



[Go to Product page](#)

Datasheet for ABIN1538457
anti-AP4B1 antibody (AA 492-520)

1 Image

Overview

Quantity:	400 µL
Target:	AP4B1
Binding Specificity:	AA 492-520
Reactivity:	Human
Host:	Rabbit
Clonality:	Polyclonal
Conjugate:	This AP4B1 antibody is un-conjugated
Application:	Western Blotting (WB)

Product Details

Immunogen:	This AP4B1 antibody is generated from rabbits immunized with a KLH conjugated synthetic peptide between 492-520 amino acids from the Central region of human AP4B1.
Clone:	RB37295
Isotype:	Ig Fraction
Predicted Reactivity:	M
Purification:	This antibody is purified through a protein A column, followed by peptide affinity purification.

Target Details

Target:	AP4B1
Alternative Name:	AP4B1 (AP4B1 Products)

Target Details

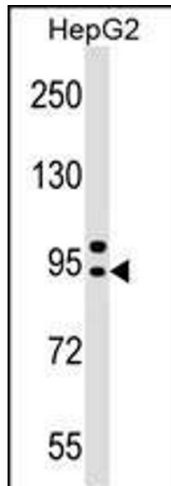
Background:	The heterotetrameric adaptor protein (AP) complexes sort integral membrane proteins at various stages of the endocytic and secretory pathways. AP4 is composed of 2 large chains, beta-4 (AP4B1) and epsilon-4 (AP4E1, MIM 607244), a medium chain, mu-4 (AP4M1, MIM 602296), and a small chain, sigma-4 (AP4S1, MIM 607243).
Molecular Weight:	83260
Gene ID:	10717
NCBI Accession:	NP_001240781 , NP_001240782 , NP_006585
UniProt:	Q9Y6B7

Application Details

Application Notes:	WB: 1:1000
Restrictions:	For Research Use only

Handling

Format:	Liquid
Buffer:	Purified polyclonal antibody supplied in PBS with 0.09 % (W/V) sodium azide.
Preservative:	Sodium azide
Precaution of Use:	This product contains Sodium azide: a POISONOUS AND HAZARDOUS SUBSTANCE which should be handled by trained staff only.
Storage:	4 °C,-20 °C
Storage Comment:	AP4B1 Antibody (Center) can be refrigerated at 2-8 °C for up to 6 months. For long term storage, keep at -20 °C.
Expiry Date:	6 months



Western Blotting

Image 1. B1 Antibody (Center) (ABIN1538457 and ABIN2848913) western blot analysis in HepG2 cell line lysates (35 µg/lane). This demonstrates the B1 antibody detected the B1 protein (arrow).