

Datasheet for ABIN1538458  
**anti-Cyclin F antibody (AA 496-524)**

## 2 Images

[Go to Product page](#)

## Overview

Quantity:	400 µL
Target:	Cyclin F (CCNF)
Binding Specificity:	AA 496-524
Reactivity:	Human, Mouse
Host:	Rabbit
Clonality:	Polyclonal
Conjugate:	This Cyclin F antibody is un-conjugated
Application:	Western Blotting (WB)

## Product Details

Immunogen:	This CCNF antibody is generated from rabbits immunized with a KLH conjugated synthetic peptide between 496-524 amino acids from the Central region of human CCNF.
Clone:	RB24427
Isotype:	Ig Fraction
Purification:	This antibody is purified through a protein A column, followed by peptide affinity purification.

## Target Details

Target:	Cyclin F (CCNF)
Alternative Name:	CCNF ( <a href="#">CCNF Products</a> )
Background:	This gene encodes a member of the cyclin family. Cyclins are important regulators of cell cycle

## Target Details

transitions through their ability to bind and activate cyclin-dependent protein kinases. This member also belongs to the F-box protein family which is characterized by an approximately 40 amino acid motif, the F-box. The F-box proteins constitute one of the four subunits of the ubiquitin protein ligase complex called SCFs (SKP1-cullin-F-box), which function in phosphorylation-dependent ubiquitination. The F-box proteins are divided into 3 classes: Fbws containing WD-40 domains, Fbls containing leucine-rich repeats, and Fbxs containing either different protein-protein interaction modules or no recognizable motifs. The protein encoded by this gene belongs to the Fbxs class and it was one of the first proteins in which the F-box motif was identified.

Molecular Weight:	87640
-------------------	-------

Gene ID:	899
----------	-----

NCBI Accession:	<a href="#">NP_001752</a>
-----------------	---------------------------

UniProt:	<a href="#">P41002</a>
----------	------------------------

## Application Details

Application Notes:	WB: 1:1000. WB: 1:1000
--------------------	------------------------

Restrictions:	For Research Use only
---------------	-----------------------

## Handling

Format:	Liquid
---------	--------

Buffer:	Purified polyclonal antibody supplied in PBS with 0.09 % (W/V) sodium azide.
---------	--

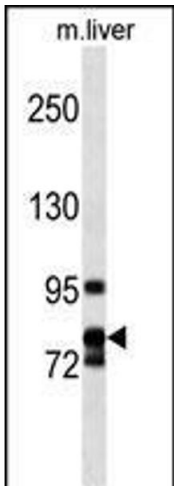
Preservative:	Sodium azide
---------------	--------------

Precaution of Use:	This product contains Sodium azide: a POISONOUS AND HAZARDOUS SUBSTANCE which should be handled by trained staff only.
--------------------	--

Storage:	4 °C, -20 °C
----------	--------------

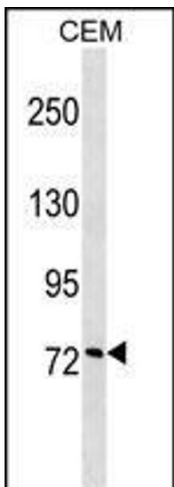
Storage Comment:	CCNF Antibody (Center) can be refrigerated at 2-8 °C for up to 6 months. For long term storage, keep at -20 °C.
------------------	---

Expiry Date:	6 months
--------------	----------



Western Blotting

**Image 1.** CCNF Antibody (Center) (ABIN1538458 and ABIN2849818) western blot analysis in mouse liver tissue lysates (35 µg/lane). This demonstrates the CCNF Antibody detected the CCNF protein (arrow).



Western Blotting

**Image 2.** CCNF Antibody (Center) (ABIN1538458 and ABIN2849818) western blot analysis in CEM cell line lysates (35 µg/lane). This demonstrates the CCNF Antibody detected the CCNF protein (arrow).