

Datasheet for ABIN1538460
anti-MKL1 antibody (AA 497-525)[Go to Product page](#)

1 Image

Overview

| | |
|----------------------|-----------------------|
| Quantity: | 400 µL |
| Target: | MKL1 |
| Binding Specificity: | AA 497-525 |
| Reactivity: | Human |
| Host: | Rabbit |
| Clonality: | Polyclonal |
| Application: | Western Blotting (WB) |

Product Details

| | |
|---------------|---|
| Immunogen: | This MKL1 antibody is generated from rabbits immunized with a KLH conjugated synthetic peptide between 497-525 amino acids from the Central region of human MKL1. |
| Clone: | RB39491 |
| Isotype: | Ig Fraction |
| Purification: | This antibody is purified through a protein A column, followed by peptide affinity purification. |

Target Details

| | |
|-------------------|---|
| Target: | MKL1 |
| Alternative Name: | MKL1 (MKL1 Products) |
| Background: | The protein encoded by this gene interacts with the transcription factor myocardin, a key regulator of smooth muscle cell differentiation. The encoded protein is predominantly nuclear and may help transduce signals from the cytoskeleton to the nucleus. This gene is involved in a |

Target Details

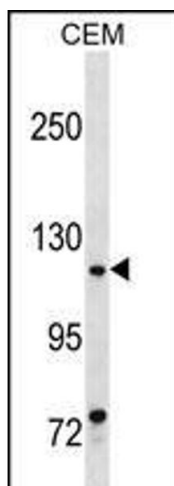
| | |
|-------------------|---|
| | specific translocation event that creates a fusion of this gene and the RNA-binding motif protein-15 gene. This translocation has been associated with acute megakaryocytic leukemia. |
| Molecular Weight: | 98919 |
| Gene ID: | 57591 |
| NCBI Accession: | NP_065882 |
| UniProt: | Q969V6 |

Application Details

| | |
|--------------------|-----------------------|
| Application Notes: | WB: 1:1000 |
| Restrictions: | For Research Use only |

Handling

| | |
|--------------------|--|
| Format: | Liquid |
| Buffer: | Purified polyclonal antibody supplied in PBS with 0.09 % (W/V) sodium azide. |
| Preservative: | Sodium azide |
| Precaution of Use: | This product contains Sodium azide: a POISONOUS AND HAZARDOUS SUBSTANCE which should be handled by trained staff only. |
| Storage: | 4 °C,-20 °C |
| Storage Comment: | MKL1 Antibody (Center) can be refrigerated at 2-8 °C for up to 6 months. For long term storage, keep at -20 °C. |
| Expiry Date: | 6 months |



Western Blotting

Image 1. MKL1 Antibody (Center) (ABIN1538460 and ABIN2850260) western blot analysis in CEM cell line lysates (35 µg/lane). This demonstrates the MKL1 antibody detected the MKL1 protein (arrow).