

Datasheet for ABIN1538470  
**anti-SSX3 antibody (AA 53-80)**[Go to Product page](#)

## 1 Image

## Overview

Quantity:	400 µL
Target:	SSX3
Binding Specificity:	AA 53-80
Reactivity:	Human
Host:	Rabbit
Clonality:	Polyclonal
Conjugate:	This SSX3 antibody is un-conjugated
Application:	Western Blotting (WB)

## Product Details

Immunogen:	This SSX3 antibody is generated from rabbits immunized with a KLH conjugated synthetic peptide between 53-80 amino acids from the Central region of human SSX3.
Clone:	RB38414
Isotype:	Ig Fraction
Purification:	This antibody is purified through a protein A column, followed by peptide affinity purification.

## Target Details

Target:	SSX3
Alternative Name:	SSX3 ( <a href="#">SSX3 Products</a> )
Background:	The product of this gene belongs to the family of highly homologous synovial sarcoma X (SSX)

## Target Details

breakpoint proteins. These proteins may function as transcriptional repressors. They are also capable of eliciting spontaneously humoral and cellular immune responses in cancer patients, and are potentially useful targets in cancer vaccine-based immunotherapy. SSX1, SSX2 and SSX4 genes have been involved in the t(X,18) translocation characteristically found in all synovial sarcomas. This gene appears not to be involved in this type of chromosome translocation. Two transcript variants encoding distinct isoforms have been identified for this gene.

Molecular Weight: 21697

Gene ID: 10214

NCBI Accession: [NP\\_066294](#)

UniProt: [Q99909](#)

## Application Details

Application Notes: WB: 1:1000

Restrictions: For Research Use only

## Handling

Format: Liquid

Buffer: Purified polyclonal antibody supplied in PBS with 0.09 % (W/V) sodium azide.

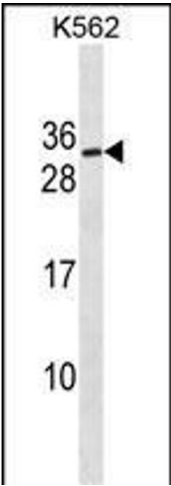
Preservative: Sodium azide

Precaution of Use: This product contains Sodium azide: a POISONOUS AND HAZARDOUS SUBSTANCE which should be handled by trained staff only.

Storage: 4 °C, -20 °C

Storage Comment: SSX3 Antibody (Center) can be refrigerated at 2-8 °C for up to 6 months. For long term storage, keep at -20 °C.

Expiry Date: 6 months



Western Blotting

**Image 1.** SSX3 Antibody (Center) (ABIN1538470 and ABIN2849880) western blot analysis in K562 cell line lysates (35 µg/lane). This demonstrates the SSX3 Antibody detected the SSX3 protein (arrow).