

Datasheet for ABIN1538489
anti-CAPNS2 antibody (AA 55-83)[Go to Product page](#)

2 Images

Overview

Quantity:	400 µL
Target:	CAPNS2
Binding Specificity:	AA 55-83
Reactivity:	Human, Mouse
Host:	Rabbit
Clonality:	Polyclonal
Conjugate:	This CAPNS2 antibody is un-conjugated
Application:	Western Blotting (WB)

Product Details

Immunogen:	This CAPNS2 antibody is generated from rabbits immunized with a KLH conjugated synthetic peptide between 55-83 amino acids from the Central region of human CAPNS2.
Clone:	RB40355
Isotype:	Ig Fraction
Purification:	This antibody is purified through a protein A column, followed by peptide affinity purification.

Target Details

Target:	CAPNS2
Alternative Name:	CAPNS2 (CAPNS2 Products)
Background:	Calcium-regulated non-lysosomal thiol-protease which catalyzes limited proteolysis of

Target Details

substrates involved in cytoskeletal remodeling and signal transduction. This small subunit may act as a tissue-specific chaperone of the large subunit, possibly by helping it fold into its correct conformation for activity.

Molecular Weight: 27660

Gene ID: 84290

NCBI Accession: [NP_115706](#)

UniProt: [Q96L46](#)

Application Details

Application Notes: WB: 1:1000. WB: 1:1000

Restrictions: For Research Use only

Handling

Format: Liquid

Buffer: Purified polyclonal antibody supplied in PBS with 0.09 % (W/V) sodium azide.

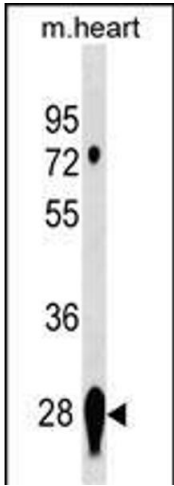
Preservative: Sodium azide

Precaution of Use: This product contains Sodium azide: a POISONOUS AND HAZARDOUS SUBSTANCE which should be handled by trained staff only.

Storage: 4 °C, -20 °C

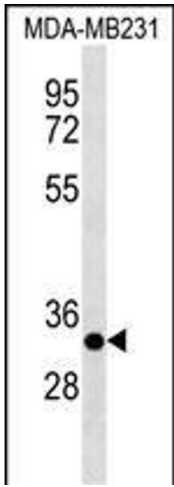
Storage Comment: CAPNS2 Antibody (Center) can be refrigerated at 2-8 °C for up to 6 months. For long term storage, keep at -20 °C.

Expiry Date: 6 months



Western Blotting

Image 1. CNS2 Antibody (Center) 19354c western blot analysis in mouse heart tissue lysates (35 µg/lane). This demonstrates the CNS2 antibody detected the CNS2 protein (arrow).



Western Blotting

Image 2. CNS2 Antibody (Center) 19354c western blot analysis in MDA-M cell line lysates (35 µg/lane). This demonstrates the CNS2 antibody detected the CNS2 protein (arrow).