

Datasheet for ABIN1538506
anti-EAF1 antibody (AA 58-85)[Go to Product page](#)

1 Image

Overview

Quantity:	400 µL
Target:	EAF1
Binding Specificity:	AA 58-85
Reactivity:	Human
Host:	Rabbit
Clonality:	Polyclonal
Conjugate:	This EAF1 antibody is un-conjugated
Application:	Western Blotting (WB)

Product Details

Immunogen:	This EAF1 antibody is generated from rabbits immunized with a KLH conjugated synthetic peptide between 58-85 amino acids from the Central region of human EAF1.
Clone:	RB37314
Isotype:	Ig Fraction
Predicted Reactivity:	M
Purification:	This antibody is purified through a protein A column, followed by peptide affinity purification.

Target Details

Target:	EAF1
Alternative Name:	EAF1 (EAF1 Products)

Target Details

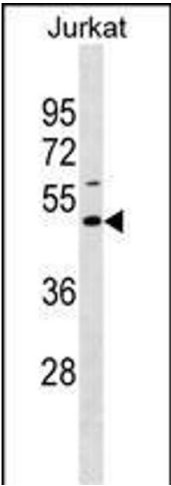
Background:	EAF1 acts as a transcriptional transactivator of ELL and ELL2 elongation activities.
Molecular Weight:	29042
Gene ID:	85403
NCBI Accession:	NP_149074
UniProt:	Q96JC9

Application Details

Application Notes:	WB: 1:1000
Restrictions:	For Research Use only

Handling

Format:	Liquid
Buffer:	Purified polyclonal antibody supplied in PBS with 0.09 % (W/V) sodium azide.
Preservative:	Sodium azide
Precaution of Use:	This product contains Sodium azide: a POISONOUS AND HAZARDOUS SUBSTANCE which should be handled by trained staff only.
Storage:	4 °C,-20 °C
Storage Comment:	EAF1 Antibody (Center) can be refrigerated at 2-8 °C for up to 6 months. For long term storage, keep at -20 °C.
Expiry Date:	6 months



Western Blotting

Image 1. EAF1 Antibody (Center) (ABIN1538506 and ABIN2850095) western blot analysis in Jurkat cell line lysates (35 µg/lane). This demonstrates the EAF1 antibody detected the EAF1 protein (arrow).