

Datasheet for ABIN1538511  
**anti-ZNRF1 antibody (AA 59-86)**[Go to Product page](#)

## 1 Image

## Overview

Quantity:	400 µL
Target:	ZNRF1
Binding Specificity:	AA 59-86
Reactivity:	Human
Host:	Rabbit
Clonality:	Polyclonal
Conjugate:	This ZNRF1 antibody is un-conjugated
Application:	Western Blotting (WB)

## Product Details

Immunogen:	This ZNRF1 antibody is generated from rabbits immunized with a KLH conjugated synthetic peptide between 59-86 amino acids from the Central region of human ZNRF1.
Clone:	RB36516
Isotype:	Ig Fraction
Predicted Reactivity:	M
Purification:	This antibody is purified through a protein A column, followed by peptide affinity purification.

## Target Details

Target:	ZNRF1
Alternative Name:	ZNRF1 ( <a href="#">ZNRF1 Products</a> )

## Target Details

**Background:** In a study identifying genes in rat that are upregulated in response to nerve damage, a gene which is highly expressed in ganglia and in the central nervous system was found. The protein encoded by the rat gene contains both a zinc finger and a RING finger motif and is localized in the endosome/lysosome compartment, indicating that it may be involved in ubiquitin-mediated protein modification. The protein encoded by this human gene is highly similar in sequence to that encoded by the rat gene. [provided by RefSeq].

**Molecular Weight:** 23783

**Gene ID:** 84937

**NCBI Accession:** [NP\\_115644](#)

**UniProt:** [Q8ND25](#)

## Application Details

**Application Notes:** WB: 1:1000

**Restrictions:** For Research Use only

## Handling

**Format:** Liquid

**Buffer:** Purified polyclonal antibody supplied in PBS with 0.09 % (W/V) sodium azide.

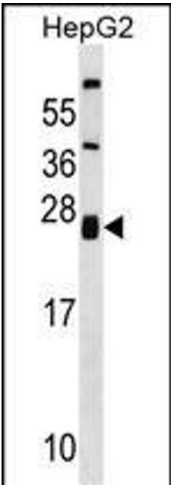
**Preservative:** Sodium azide

**Precaution of Use:** This product contains Sodium azide: a POISONOUS AND HAZARDOUS SUBSTANCE which should be handled by trained staff only.

**Storage:** 4 °C, -20 °C

**Storage Comment:** ZNRF1 Antibody (Center) can be refrigerated at 2-8 °C for up to 6 months. For long term storage, keep at -20 °C.

**Expiry Date:** 6 months



Western Blotting

**Image 1.** ZNRF1 Antibody (Center) (ABIN1538511 and ABIN2848452) western blot analysis in HepG2 cell line lysates (35 µg/lane). This demonstrates the ZNRF1 antibody detected the ZNRF1 protein (arrow).