

Datasheet for ABIN1538516  
**anti-SLPI antibody (AA 59-88)**[Go to Product page](#)

## 1 Image

## Overview

Quantity:	400 µL
Target:	SLPI
Binding Specificity:	AA 59-88
Reactivity:	Human
Host:	Rabbit
Clonality:	Polyclonal
Conjugate:	This SLPI antibody is un-conjugated
Application:	Western Blotting (WB)

## Product Details

Immunogen:	This SLPI antibody is generated from rabbits immunized with a KLH conjugated synthetic peptide between 59-88 amino acids from the Central region of human SLPI.
Clone:	RB36771
Isotype:	Ig Fraction
Purification:	This antibody is purified through a protein A column, followed by peptide affinity purification.

## Target Details

Target:	SLPI
Alternative Name:	SLPI ( <a href="#">SLPI Products</a> )
Background:	This gene encodes a secreted inhibitor which protects epithelial tissues from serine proteases.

## Target Details

It is found in various secretions including seminal plasma, cervical mucus, and bronchial secretions, and has affinity for trypsin, leukocyte elastase, and cathepsin G. Its inhibitory effect contributes to the immune response by protecting epithelial surfaces from attack by endogenous proteolytic enzymes, the protein is also thought to have broad-spectrum anti-biotic activity.

Molecular Weight: 14326

Gene ID: 6590

NCBI Accession: [NP\\_003055](#)

UniProt: [P03973](#)

## Application Details

Application Notes: WB: 1:1000

Restrictions: For Research Use only

## Handling

Format: Liquid

Buffer: Purified polyclonal antibody supplied in PBS with 0.09 % (W/V) sodium azide.

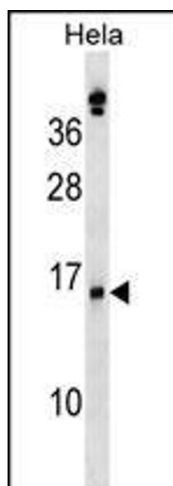
Preservative: Sodium azide

Precaution of Use: This product contains Sodium azide: a POISONOUS AND HAZARDOUS SUBSTANCE which should be handled by trained staff only.

Storage: 4 °C,-20 °C

Storage Comment: SLPI Antibody (Center) can be refrigerated at 2-8 °C for up to 6 months. For long term storage, keep at -20 °C.

Expiry Date: 6 months



#### Western Blotting

**Image 1.** SLPI Antibody (Center) (ABIN1538516 and ABIN2848668) western blot analysis in HeLa cell line lysates (35 µg/lane). This demonstrates the SLPI antibody detected the SLPI protein (arrow).