

Datasheet for ABIN1538520
anti-INF2 antibody (AA 589-616)[Go to Product page](#)

1 Image

Overview

Quantity:	400 µL
Target:	INF2
Binding Specificity:	AA 589-616
Reactivity:	Human, Mouse
Host:	Rabbit
Clonality:	Polyclonal
Conjugate:	This INF2 antibody is un-conjugated
Application:	Western Blotting (WB)

Product Details

Immunogen:	This INF2 antibody is generated from rabbits immunized with a KLH conjugated synthetic peptide between 589-616 amino acids from the Central region of human INF2.
Clone:	RB36927
Isotype:	Ig Fraction
Purification:	This antibody is purified through a protein A column, followed by peptide affinity purification.

Target Details

Target:	INF2
Alternative Name:	INF2 (INF2 Products)
Background:	This gene represents a member of the formin family of proteins. It is considered a diaphanous

Target Details

formin due to the presence of a diaphanous inhibitory domain located at the N-terminus of the encoded protein. Studies of a similar mouse protein indicate that the protein encoded by this locus may function in polymerization and depolymerization of actin filaments. Mutations at this locus have been associated with focal segmental glomerulosclerosis 5.

Molecular Weight: 135624

Gene ID: 64423

NCBI Accession: [NP_001026884](#), [NP_071934](#), [NP_116103](#)

UniProt: [Q27J81](#)

Application Details

Application Notes: WB: 1:1000

Restrictions: For Research Use only

Handling

Format: Liquid

Buffer: Purified polyclonal antibody supplied in PBS with 0.09 % (W/V) sodium azide.

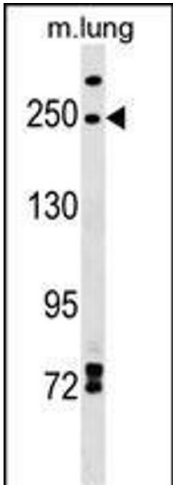
Preservative: Sodium azide

Precaution of Use: This product contains Sodium azide: a POISONOUS AND HAZARDOUS SUBSTANCE which should be handled by trained staff only.

Storage: 4 °C, -20 °C

Storage Comment: INF2 Antibody (Center) can be refrigerated at 2-8 °C for up to 6 months. For long term storage, keep at -20 °C.

Expiry Date: 6 months



Western Blotting

Image 1. INF2 Antibody (Center) (ABIN1538520 and ABIN2849238) western blot analysis in mouse lung tissue lysates (35 µg/lane). This demonstrates the INF2 antibody detected the INF2 protein (arrow).