

Datasheet for ABIN1538525  
**anti-SHROOM2 antibody (AA 599-625)**[Go to Product page](#)

## 1 Image

## Overview

Quantity:	400 µL
Target:	SHROOM2
Binding Specificity:	AA 599-625
Reactivity:	Human
Host:	Rabbit
Clonality:	Polyclonal
Conjugate:	This SHROOM2 antibody is un-conjugated
Application:	Western Blotting (WB)

## Product Details

Immunogen:	This SHROOM2 antibody is generated from rabbits immunized with a KLH conjugated synthetic peptide between 599-625 amino acids from the Central region of human SHROOM2.
Clone:	RB37634
Isotype:	Ig Fraction
Purification:	This antibody is purified through a protein A column, followed by peptide affinity purification.

## Target Details

Target:	SHROOM2
Alternative Name:	SHROOM2 ( <a href="#">SHROOM2 Products</a> )
Background:	The protein encoded by this gene shares significant similarities with the apical protein from

## Target Details

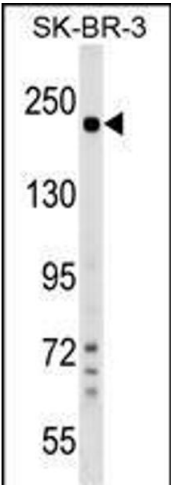
	Xenopus laevis which is implicated in amiloride-sensitive sodium channel activity. This gene is a strong candidate gene for ocular albinism type 1 syndrome.
Molecular Weight:	176410
Gene ID:	357
NCBI Accession:	<a href="#">NP_001640</a>
UniProt:	<a href="#">Q13796</a>
Pathways:	<a href="#">Cell-Cell Junction Organization</a> , <a href="#">Asymmetric Protein Localization</a>

## Application Details

Application Notes:	WB: 1:1000
Restrictions:	For Research Use only

## Handling

Format:	Liquid
Buffer:	Purified polyclonal antibody supplied in PBS with 0.09 % (W/V) sodium azide.
Preservative:	Sodium azide
Precaution of Use:	This product contains Sodium azide: a POISONOUS AND HAZARDOUS SUBSTANCE which should be handled by trained staff only.
Storage:	4 °C, -20 °C
Storage Comment:	SHROOM2 Antibody (Center) can be refrigerated at 2-8 °C for up to 6 months. For long term storage, keep at -20 °C.
Expiry Date:	6 months



Western Blotting

**Image 1.** SHROOM2 Antibody (Center) (ABIN1538525 and ABIN2849363) western blot analysis in SK-BR-3 cell line lysates (35 µg/lane). This demonstrates the SHROOM2 antibody detected the SHROOM2 protein (arrow).