

Datasheet for ABIN1538530  
**anti-STAT2 antibody (AA 600-626)**



[Go to Product page](#)

1 Image

## Overview

Quantity:	400 µL
Target:	STAT2
Binding Specificity:	AA 600-626
Reactivity:	Mouse
Host:	Rabbit
Clonality:	Polyclonal
Conjugate:	This STAT2 antibody is un-conjugated
Application:	Western Blotting (WB)

## Product Details

Immunogen:	This Mouse Stat2 antibody is generated from rabbits immunized with a KLH conjugated synthetic peptide between 600-626 amino acids from the Central region of mouse Stat2.
Clone:	RB38660
Isotype:	Ig Fraction
Purification:	This antibody is purified through a protein A column, followed by peptide affinity purification.

## Target Details

Target:	STAT2
Alternative Name:	Stat2 ( <a href="#">STAT2 Products</a> )
Background:	Transcription factor that binds to the IFN-stimulated response element (ISRE) and to the GAS

## Target Details

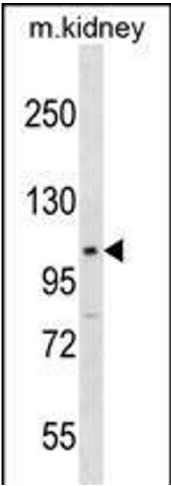
	element. This multiprotein transcription factor is termed ISGF3.
Molecular Weight:	105417
Gene ID:	20847
UniProt:	<a href="#">Q9WVL2</a>
Pathways:	<a href="#">JAK-STAT Signaling</a> , <a href="#">Hepatitis C</a> , <a href="#">CXCR4-mediated Signaling Events</a>

## Application Details

Application Notes:	WB: 1:1000
Restrictions:	For Research Use only

## Handling

Format:	Liquid
Buffer:	Purified polyclonal antibody supplied in PBS with 0.09 % (W/V) sodium azide.
Preservative:	Sodium azide
Precaution of Use:	This product contains Sodium azide: a POISONOUS AND HAZARDOUS SUBSTANCE which should be handled by trained staff only.
Storage:	4 °C,-20 °C
Storage Comment:	Mouse Stat2 Antibody (Center) can be refrigerated at 2-8 °C for up to 6 months. For long term storage, keep at -20 °C.
Expiry Date:	6 months



Western Blotting

**Image 1.** Mouse Stat2 Antibody (Center) (ABIN1538530 and ABIN2850332) western blot analysis in mouse kidney tissue lysates (35 µg/lane). This demonstrates the Stat2 antibody detected the Stat2 protein (arrow).