



[Go to Product page](#)

Datasheet for ABIN1538531
anti-ARHGEF11 antibody (AA 605-632)

1 Image

Overview

Quantity:	400 µL
Target:	ARHGEF11
Binding Specificity:	AA 605-632
Reactivity:	Human
Host:	Rabbit
Clonality:	Polyclonal
Conjugate:	This ARHGEF11 antibody is un-conjugated
Application:	Western Blotting (WB)

Product Details

Immunogen:	This ARHGEF11 antibody is generated from rabbits immunized with a KLH conjugated synthetic peptide between 605-632 amino acids from the Central region of human ARHGEF11.
Clone:	RB36298
Isotype:	Ig Fraction
Predicted Reactivity:	Rat
Purification:	This antibody is purified through a protein A column, followed by peptide affinity purification.

Target Details

Target:	ARHGEF11
Alternative Name:	ARHGEF11 (ARHGEF11 Products)

Target Details

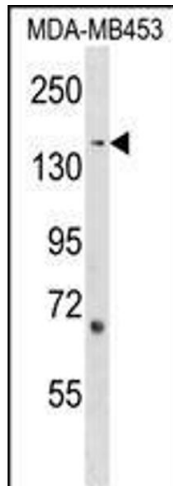
Background:	Rho GTPases play a fundamental role in numerous cellular processes that are initiated by extracellular stimuli that work through G protein coupled receptors. The encoded protein may form a complex with G proteins and stimulate Rho-dependent signals. A similar protein in rat interacts with glutamate transporter EAAT4 and modulates its glutamate transport activity. Expression of the rat protein induces the reorganization of the actin cytoskeleton and its overexpression induces the formation of membrane ruffling and filopodia. Two alternative transcripts encoding different isoforms have been described.
Molecular Weight:	167704
Gene ID:	9826
NCBI Accession:	NP_055599 , NP_937879
UniProt:	O15085
Pathways:	Neurotrophin Signaling Pathway , Regulation of G-Protein Coupled Receptor Protein Signaling

Application Details

Application Notes:	WB: 1:1000
Restrictions:	For Research Use only

Handling

Format:	Liquid
Buffer:	Purified polyclonal antibody supplied in PBS with 0.09 % (W/V) sodium azide.
Preservative:	Sodium azide
Precaution of Use:	This product contains Sodium azide: a POISONOUS AND HAZARDOUS SUBSTANCE which should be handled by trained staff only.
Storage:	4 °C,-20 °C
Storage Comment:	ARHGEF11 Antibody (Center) can be refrigerated at 2-8 °C for up to 6 months. For long term storage, keep at -20 °C.
Expiry Date:	6 months



Western Blotting

Image 1. ARHGEF11 Antibody (Center) (ABIN1538531 and ABIN2848595) western blot analysis in MDA-M cell line lysates (35 µg/lane). This demonstrates the ARHGEF11 antibody detected the ARHGEF11 protein (arrow).