

Datasheet for ABIN1538537
anti-TBC1D1 antibody (AA 617-645)



[Go to Product page](#)

1 Image

Overview

Quantity:	400 µL
Target:	TBC1D1
Binding Specificity:	AA 617-645
Reactivity:	Human
Host:	Rabbit
Clonality:	Polyclonal
Conjugate:	This TBC1D1 antibody is un-conjugated
Application:	Western Blotting (WB)

Product Details

Immunogen:	This TBC1D1 antibody is generated from rabbits immunized with a KLH conjugated synthetic peptide between 617-645 amino acids from the Central region of human TBC1D1.
Clone:	RB37097
Isotype:	Ig Fraction
Purification:	This antibody is purified through a protein A column, followed by peptide affinity purification.

Target Details

Target:	TBC1D1
Alternative Name:	TBC1D1 (TBC1D1 Products)
Background:	TBC1D1 is the founding member of a family of proteins sharing a 180- to 200-amino acid TBC

Target Details

domain presumed to have a role in regulating cell growth and differentiation. These proteins share significant homology with TRE2 (USP6, MIM 604334), yeast Bub2, and CDC16 (MIM 603461) (White et al., 2000 [PubMed 10965142]).[supplied by OMIM].

Molecular Weight: 133084

Gene ID: 23216

NCBI Accession: [NP_001240841](#), [NP_055988](#)

UniProt: [Q86T10](#)

Application Details

Application Notes: WB: 1:1000

Restrictions: For Research Use only

Handling

Format: Liquid

Buffer: Purified polyclonal antibody supplied in PBS with 0.09 % (W/V) sodium azide.

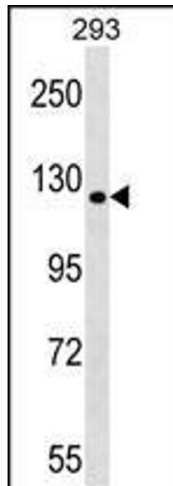
Preservative: Sodium azide

Precaution of Use: This product contains Sodium azide: a POISONOUS AND HAZARDOUS SUBSTANCE which should be handled by trained staff only.

Storage: 4 °C, -20 °C

Storage Comment: TBC1D1 Antibody (Center) can be refrigerated at 2-8 °C for up to 6 months. For long term storage, keep at -20 °C.

Expiry Date: 6 months



Western Blotting

Image 1. TBC1D1 Antibody (Center) (ABIN1538537 and ABIN2848892) western blot analysis in 293 cell line lysates (35 µg/lane). This demonstrates the TBC1D1 antibody detected the TBC1D1 protein (arrow).