



[Go to Product page](#)

Datasheet for ABIN1538539
anti-PPIL1 antibody (AA 63-91)

1 Image

Overview

Quantity:	400 µL
Target:	PPIL1
Binding Specificity:	AA 63-91
Reactivity:	Human
Host:	Rabbit
Clonality:	Polyclonal
Conjugate:	This PPIL1 antibody is un-conjugated
Application:	Western Blotting (WB)

Product Details

Immunogen:	This PPIL1 antibody is generated from rabbits immunized with a KLH conjugated synthetic peptide between 63-91 amino acids from the Central region of human PPIL1.
Clone:	RB36540
Isotype:	Ig Fraction
Predicted Reactivity:	B, M
Purification:	This antibody is purified through a protein A column, followed by peptide affinity purification.

Target Details

Target:	PPIL1
Alternative Name:	PPIL1 (PPIL1 Products)

Target Details

Background: This gene is a member of the cyclophilin family of peptidylprolyl isomerases (PPIases). The cyclophilins are a highly conserved, ubiquitous family, members of which play an important role in protein folding, immunosuppression by cyclosporin A, and infection of HIV-1 virions. Based on similarity to other PPIases, this protein could accelerate the folding of proteins and might catalyze the cis-trans isomerization of proline imidic peptide bonds in oligopeptides.

Molecular Weight: 18237

Gene ID: 51645

NCBI Accession: [NP_057143](#)

UniProt: [Q9Y3C6](#)

Application Details

Application Notes: WB: 1:1000

Restrictions: For Research Use only

Handling

Format: Liquid

Buffer: Purified polyclonal antibody supplied in PBS with 0.09 % (W/V) sodium azide.

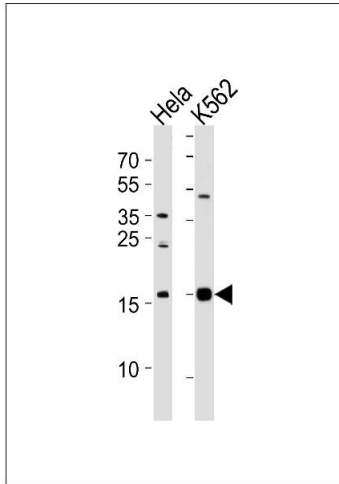
Preservative: Sodium azide

Precaution of Use: This product contains Sodium azide: a POISONOUS AND HAZARDOUS SUBSTANCE which should be handled by trained staff only.

Storage: 4 °C,-20 °C

Storage Comment: PPIL1 Antibody (Center) can be refrigerated at 2-8 °C for up to 6 months. For long term storage, keep at -20 °C.

Expiry Date: 6 months



Western Blotting

Image 1. Western blot analysis of lysates from HeLa, K562 cell line (from left to right), using IL1 Antibody (Center) (ABIN1538539 and ABIN2848454). (ABIN1538539 and ABIN2848454) was diluted at 1:1000 at each lane. A goat anti-rabbit IgG H&L(HRP) at 1:5000 dilution was used as the secondary antibody. Lysates at 35 µg per lane.