



Datasheet for ABIN1538546
anti-NHSL1 antibody (AA 632-661)



[Go to Product page](#)

1 Image

Overview

Quantity:	400 µL
Target:	NHSL1
Binding Specificity:	AA 632-661
Reactivity:	Human
Host:	Rabbit
Clonality:	Polyclonal
Conjugate:	This NHSL1 antibody is un-conjugated
Application:	Western Blotting (WB)

Product Details

Immunogen:	This NHSL1 antibody is generated from rabbits immunized with a KLH conjugated synthetic peptide between 632-661 amino acids from the Central region of human NHSL1.
Clone:	RB26716
Isotype:	Ig Fraction
Purification:	This antibody is purified through a protein A column, followed by peptide affinity purification.

Target Details

Target:	NHSL1
Alternative Name:	NHSL1 (NHSL1 Products)
Background:	The function of this protein remains unknown.

Target Details

Molecular Weight:	170668
Gene ID:	57224
NCBI Accession:	NP_001137532 , NP_065197
UniProt:	Q5SYE7

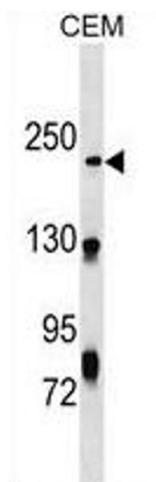
Application Details

Application Notes:	WB: 1:1000
Restrictions:	For Research Use only

Handling

Format:	Liquid
Buffer:	Purified polyclonal antibody supplied in PBS with 0.09 % (W/V) sodium azide.
Preservative:	Sodium azide
Precaution of Use:	This product contains Sodium azide: a POISONOUS AND HAZARDOUS SUBSTANCE which should be handled by trained staff only.
Storage:	4 °C, -20 °C
Storage Comment:	NHSL1 Antibody (Center) can be refrigerated at 2-8 °C for up to 6 months. For long term storage, keep at -20 °C.
Expiry Date:	6 months

Images



Western Blotting

Image 1. NHSL1 Antibody (Center) (ABIN1538546 and ABIN2849679) western blot analysis in CEM cell line lysates (35 µg/lane). This demonstrates the NHSL1 antibody detected the NHSL1 protein (arrow).