

Datasheet for ABIN1538552
anti-NCKAP1L antibody (AA 641-669)[Go to Product page](#)

1 Image

Overview

Quantity:	400 µL
Target:	NCKAP1L
Binding Specificity:	AA 641-669
Reactivity:	Human, Mouse
Host:	Rabbit
Clonality:	Polyclonal
Conjugate:	This NCKAP1L antibody is un-conjugated
Application:	Western Blotting (WB)

Product Details

Immunogen:	This NCKPL antibody is generated from rabbits immunized with a KLH conjugated synthetic peptide between 641-669 amino acids from the Central region of human NCKPL.
Clone:	RB25232
Isotype:	Ig Fraction
Purification:	This antibody is purified through a protein A column, followed by peptide affinity purification.

Target Details

Target:	NCKAP1L
Abstract:	NCKAP1L Products
Background:	This gene encodes a member of the HEM family of tissue-specific transmembrane proteins

Target Details

which are highly conserved from invertebrates through mammals. This gene is only expressed in hematopoietic cells. The encoded protein is a part of the Scar/WAVE complex which plays an important role in regulating cell shape in both metazoans and plants. Alternatively spliced transcript variants encoding different isoforms have been found.

Molecular Weight: 128153

Gene ID: 3071

NCBI Accession: [NP_001171905](#), [NP_005328](#)

UniProt: [P55160](#)

Pathways: [Regulation of Actin Filament Polymerization](#)

Application Details

Application Notes: WB: 1:1000

Restrictions: For Research Use only

Handling

Format: Liquid

Buffer: Purified polyclonal antibody supplied in PBS with 0.09 % (W/V) sodium azide.

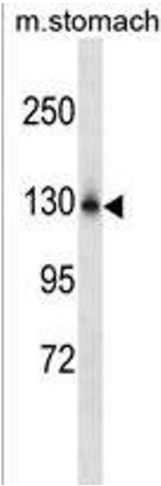
Preservative: Sodium azide

Precaution of Use: This product contains Sodium azide: a POISONOUS AND HAZARDOUS SUBSTANCE which should be handled by trained staff only.

Storage: 4 °C,-20 °C

Storage Comment: NCKPL Antibody (Center) can be refrigerated at 2-8 °C for up to 6 months. For long term storage, keep at -20 °C.

Expiry Date: 6 months



Western Blotting

Image 1. NCKPL Antibody (Center) (ABIN1538552 and ABIN2849659) western blot analysis in mouse stomach tissue lysates (35 µg/lane). This demonstrates the NCKPL antibody detected the NCKPL protein (arrow).