

Datasheet for ABIN1538553
anti-ABI3BP antibody (AA 648-675)



[Go to Product page](#)

1 Image

Overview

Quantity:	400 µL
Target:	ABI3BP
Binding Specificity:	AA 648-675
Reactivity:	Human
Host:	Rabbit
Clonality:	Polyclonal
Conjugate:	This ABI3BP antibody is un-conjugated
Application:	Western Blotting (WB)

Product Details

Immunogen:	This ABI3BP antibody is generated from rabbits immunized with a KLH conjugated synthetic peptide between 648-675 amino acids from the Central region of human ABI3BP.
Clone:	RB39513
Isotype:	Ig Fraction
Purification:	This antibody is purified through a protein A column, followed by peptide affinity purification.

Target Details

Target:	ABI3BP
Alternative Name:	ABI3BP (ABI3BP Products)
Background:	The function of this protein remains unknown.

Target Details

Molecular Weight:	118642
Gene ID:	25890
NCBI Accession:	NP_056244
UniProt:	Q7Z7G0

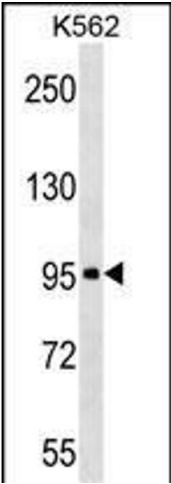
Application Details

Application Notes:	WB: 1:1000
Restrictions:	For Research Use only

Handling

Format:	Liquid
Buffer:	Purified polyclonal antibody supplied in PBS with 0.09 % (W/V) sodium azide.
Preservative:	Sodium azide
Precaution of Use:	This product contains Sodium azide: a POISONOUS AND HAZARDOUS SUBSTANCE which should be handled by trained staff only.
Storage:	4 °C,-20 °C
Storage Comment:	ABI3BP Antibody (Center) can be refrigerated at 2-8 °C for up to 6 months. For long term storage, keep at -20 °C.
Expiry Date:	6 months

Images



Western Blotting

Image 1. ABI3BP Antibody (Center) (ABIN1538553 and ABIN2850399) western blot analysis in K562 cell line lysates (35 µg/lane). This demonstrates the ABI3BP antibody detected the ABI3BP protein (arrow).