

Datasheet for ABIN1538555  
**anti-HLA-C antibody (AA 66-93)**[Go to Product page](#)

## 1 Image

## Overview

Quantity:	400 µL
Target:	HLA-C
Binding Specificity:	AA 66-93
Reactivity:	Human
Host:	Rabbit
Clonality:	Polyclonal
Conjugate:	This HLA-C antibody is un-conjugated
Application:	Western Blotting (WB)

## Product Details

Immunogen:	This HLA-C antibody is generated from rabbits immunized with a KLH conjugated synthetic peptide between 66-93 amino acids from the Central region of human HLA-C.
Clone:	RB21680
Isotype:	Ig Fraction
Purification:	This antibody is purified through a protein A column, followed by peptide affinity purification.

## Target Details

Target:	HLA-C
Alternative Name:	HLA-C ( <a href="#">HLA-C Products</a> )
Background:	HLA-C belongs to the HLA class I heavy chain paralogues. This class I molecule is a

## Target Details

heterodimer consisting of a heavy chain and a light chain (beta-2 microglobulin). The heavy chain is anchored in the membrane. Class I molecules play a central role in the immune system by presenting peptides derived from endoplasmic reticulum lumen. They are expressed in nearly all cells. The heavy chain is approximately 45 kDa and its gene contains 8 exons. Exon one encodes the leader peptide, exons 2 and 3 encode the alpha1 and alpha2 domain, which both bind the peptide, exon 4 encodes the alpha3 domain, exon 5 encodes the transmembrane region, and exons 6 and 7 encode the cytoplasmic tail. Polymorphisms within exon 2 and exon 3 are responsible for the peptide binding specificity of each class one molecule. Typing for these polymorphisms is routinely done for bone marrow and kidney transplantation. Over one hundred HLA-C alleles have been described

Molecular Weight: 40649

Gene ID: 3107

NCBI Accession: [NP\\_002108](#)

UniProt: [P10321](#)

Pathways: [Regulation of Leukocyte Mediated Immunity](#), [Positive Regulation of Immune Effector Process](#), [Human Leukocyte Antigen \(HLA\) in Adaptive Immune Response](#)

## Application Details

Application Notes: WB: 1:1000

Restrictions: For Research Use only

## Handling

Format: Liquid

Buffer: Purified polyclonal antibody supplied in PBS with 0.09 % (W/V) sodium azide.

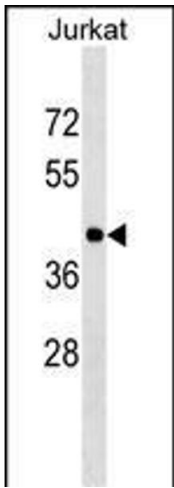
Preservative: Sodium azide

Precaution of Use: This product contains Sodium azide: a POISONOUS AND HAZARDOUS SUBSTANCE which should be handled by trained staff only.

Storage: 4 °C, -20 °C

Storage Comment: HLA-C Antibody (Center) can be refrigerated at 2-8 °C for up to 6 months. For long term storage, keep at -20 °C.

Expiry Date: 6 months



Western Blotting

**Image 1.** HLA-C Antibody (Center) (ABIN1538555 and ABIN2849396) western blot analysis in Jurkat cell line lysates (35 µg/lane). This demonstrates the HLA-C antibody detected the HLA-C protein (arrow).